



**When it rains,  
Marathon shines.**

## **STRAINERS** & Drain Guards



**Commercial Drain Specialists**

Drains • Vents • Drain Replacement Parts • Accessories • Equipment

800.828.8424

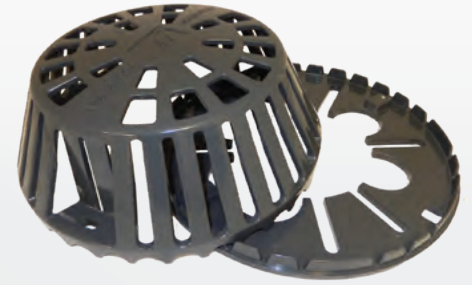
[marathondrains.com](http://marathondrains.com)



# ALUMINUM & CAST IRON RETROFIT RING & DOME

Our Retrofit Ring & Dome Kit is a universal replacement solution designed for contractors and building owners looking to upgrade or replace damaged, missing, or aged drain domes and rings—without the need to remove or replace the entire drain body.

Engineered to fit 95% of existing retrofit and new-construction-style drains on the market, this kit provides a reliable, field-proven solution for maintaining proper rooftop drainage and protecting against debris buildup. Our Retrofit Ring & Dome Kit provides the perfect fit for nearly any drain on any roof—making it a trusted choice for fast, effective ring and dome restoration.



## Features

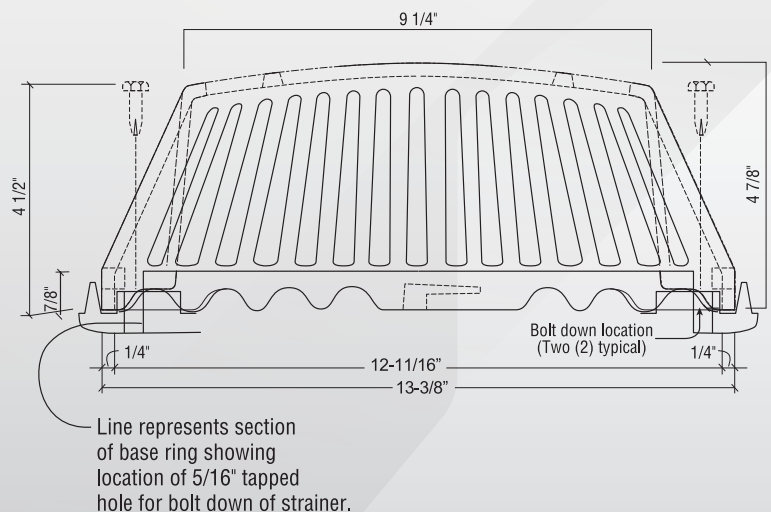
- Engineered to Fit 95% of Existing Drains on the Market
- Low Profile Dome with Bolt Down Security
- Fits Most 3" or 4" Bolt Patterns
- Heavy Duty Cast Iron Ring Dome Weighs 21 lbs.
- Aluminum Ring & Dome Weighs 9 lbs.

## Dome Features

- Available in Cast Iron or Aluminum
- Broad 12" Diameter Dome for Maximum Drainage Area
- Low Profile 5" Overall Height Designed for Stability, Strength & Handsome Profile
- Multiple Openings Matched to the Base Ring "V" Channels to Maximize Drainage
- 2 Bolts Secures Dome to Ring

## Ring Features

- Strong Cast Aluminum or Cast Iron with Four Pairs of Bolt-Down Tines to Align with Most Old Drain Bolt Patterns that Range from 6-1/2" To 11-3/4"
- Shallow Thickness of the Ring Creates a Low Profile Fit to Deck to Reduce Barriers of Drainage
- Two Opposite, Slotted Channels on the Dome that Align with the Ring Openings
- 26 "V" Channels Cut Into the Ring Perimeter to Facilitate Drainage
- Tapped, Extra Strength Lugs to Accept the 2 Hold-Down Bolts of the Dome, Allowing it to be Firmly Fixed in Place to Secure Attachment



## ALUMINUM ADJUSTABLE DRAIN GUARD

Our Aluminum Adjustable Drain Guards are a fast, flexible, and highly durable solution for protecting roof drain outlets from debris and blockages. These guards are engineered for quick and universal installation, eliminating costly and time-consuming custom fitting.

Designed to fit drain outlets from 3" to 8" (76.2-203mm), each guard features a heavy-duty steel scissor mechanism that adjusts easily to fit a wide range of drain sizes without tools. The guard domes are made of robust cast aluminum, offering exceptional resistance to corrosion, weather, and impact—making them ideal for extreme rooftop environments.

### Features

- Quick & Easy Installation - No Special Tools Required
- Fits 3" to 8" Drain Outlets - Versatile Scissor Adjustment Mechanism
- Durable Cast Aluminum Domes - Corrosion-resistant & Built for Harsh Conditions
- Six Dome Size Options:
  - 5" (127mm) - for Small Drains
  - 7.5" (190mm) - for Standard Drains
  - 10" Low Profile (2" Tall) - for Tight Clearance Installations
  - 10" (254mm) - Standard for Normal Drains
  - 13-1/2" (343mm) - for Large Drain Openings
  - 18" (457mm) - for Extra-Large Drains



PVC Coating  
Only

## STAINLESS STEEL ADJUSTABLE DRAIN GUARD

Protect your rooftop investment with the Stainless Steel Adjustable Drain Guard — the ideal solution for keeping roof drains free from debris while maintaining peak drainage performance. Designed for durability and adaptability, this guard is constructed from heavy-duty 304 stainless steel to withstand harsh weather, UV exposure, and long-term rooftop conditions.

Its adjustable design allows it to easily fit a variety of drain sizes and configurations, making it the perfect add-on for new installations or retrofit projects. The open dome structure prevents clogs from leaves, gravel, and debris, reducing maintenance costs and preventing costly water ponding issues.

Whether you're working on a commercial, industrial, or institutional roofing project, the Stainless Steel Adjustable Drain Guard is a simple, effective, and long-lasting upgrade for any drainage system.

### Features

- 304 Stainless Steel Construction for Superior Corrosion Resistance
- Adjustable Design to Fit Drain Openings of 3"- 8"
- Open Dome Design Allows High Water Flow While Blocking Debris
- Tool-Free Installation
- Ideal for Retrofit or New Construction Applications
- Maintenance-Friendly & Built to Last
- 10" (254mm) x 6" Tall Dome

### Instructions

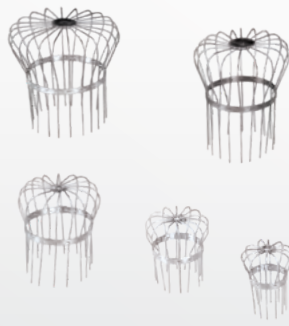
**No Tools. No Hardware. Installs in Under 1 Minute.**

1. Clean the Drain Area
  - Remove any debris from around the roof drain opening to ensure a smooth installation.
2. Adjust to Fit
  - Expand or contract the base of the guard by hand to match your drain's diameter.
3. Insert into Drain
  - Place the guard into the drain opening and gently press down.
4. Turn to Lock
  - Twist the drain guard clockwise until snug. The adjustable tension arms will grip the inside of the drain for a secure, reliable fit.



## WIRE STRAINERS

Simple protection for gutter and drain systems, our Bird Cage Wire Strainers are a cost-effective solution and are designed to maintain their shape and position once installed, making them ideal for areas where the strainer is protected from external disturbance.



### Features

- Durable Galvanized Wire Resists Rust & Corrosion
- Form-Fitting Design Holds Securely in Downspouts or Drains
- 15-17 Gauge Wire Construction for Long-Lasting, Weather-Resistant Performance
- Lightweight & Easy to Install - No Tools Required
- Prevents Clogs from Debris & Birds from Blocking Drainage Systems
- Sizes Available 2", 3" & 4"
- Available in Copper

## PLASTIC STRAINERS

Lightweight, durable, and easy to install, we offer a large range of high-performance plastic dome strainers for use with retrofit and new- construction roof drains. These dome strainers are made from rigid composite material and are available in multiple configurations to suit a wide range of drain sizes and mounting preferences.



### Features

- Twist 'N Lock (Friction Fit), Install without Tools by Simply Twisting into Place for a Secure, Snug Fit
- Designed for Bolt-In Installation with a Rigid Composite Clamping Ring (10" Only)
- Black Composite Material that is UV-Stable, Resists Cracking, Weathering, & Impact
- Lightweight & Corrosion-Free, Ideal for Roofs where Metal Strainers may not be Preferred or Permitted
- Standard Domes: 5", 8", 10", & 12" Diameters
- Spring-Fit Domes: Fits 2"-5" Outlet Diameters

## CAST IRON STRAINERS



When durability matters, our Cast Iron Domes deliver unmatched protection and flow performance for roof drain systems. Designed to fit both retrofit and new construction applications, these domes are ideal for replacing damaged, missing, or underperforming strainers in commercial environments. Providing superior water flow, increased durability, and a modern aesthetic that aligns with today's industry standards.

### Features

- Twist 'N Lock (Friction-Fit) Or Bolt-In Installation, Offering Flexibility for Different Roof Drainage Systems
- Available In Multiple Sizes & Fit Most Standard Drain Bodies, Commercial & Industrial Applications
- Sizes Available: 8", 10", 10" Low Profile, & 12" (Bolt on for 10" Only)

## ALUMINUM STRAINERS

Our Aluminum Dome Strainers provide a reliable solution for protecting rooftop drains from debris. Designed for long-term performance, these lightweight domes are compatible with a wide range of commercial and industrial roof drains—making them an ideal replacement option or upgrade for roof drain systems.



### Features

- Durable & Lightweight Design
- Twist 'N Lock (Friction-Fit) or Bolt-In Installation, offering Flexibility
- Available in Multiple Sizes & Fit Most Standard Drain Bodies, Commercial & Industrial Applications
- Sizes: 5", 7.5", 8", 10", 10" Low Profile, 10" Pro, & 12"



PVC Coating  
Only