



Proven Performance in
Extreme Conditions

STRAINERS & DRAIN GUARDS



Your One Source
for All Commercial
Roofing Products



DRAINS • VENTS • ACCESSORIES • EQUIPMENT • PEDESTAL SUPPORTS

marathondrains.com | P 800.828.8424 | F 716.332.7676

Roof drains, strainers, and guards have been manufactured for years and years in all manners of shapes, sizes and styles. They are historically difficult to match up in repair and replacement situations. Marathon Roofing Products offers a wide range of replacement styles and sizes as shown below, including a universal and variable fit replacement Ring & Dome system (see back page).

ADJUSTABLE DRAIN GUARD



Sized to Fit All Drain Openings

Lock out stones and debris with two quick twists of the wrist and prevent costly drain clog and problems. Innovative guard adjusts to most residential and commercial roof drains eliminating the expense and clutter of an extensive inventory of strainer sizes.



- Quickly installs to eliminate time and cost consuming fitting problems
- Installs to fit drain outlets 2-1/2" to 8" (63-203mm)
- Choice of 6 drain guard diameters
 - 5" (127mm) for small drains
 - 8" (203mm) for normal drains
 - 10" Low Profile (2" tall)
 - 10" (254mm) for normal drains
 - 13-1/2" (343mm) for large drain openings
 - 18" (457mm) for extra large drain openings
- Sturdy cast aluminum construction withstands extreme conditions

Installs Quickly & Easily Without Tools



- Turn strainer to expand scissors to approximately the inside diameter of existing drain
- Insert unit in drain, positioning it so the bottom of the strainer is just above the surface of the roofing material
- Turn the strainer to further expand the scissors, unit tight

PLASTIC STRAINERS

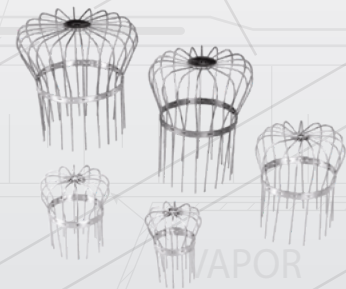


Economical Fits Many Applications

- Most models are friction fit by twist 'n lock. Some models are bolt-in-place
- Adaptable to many, but not all, drain base diameters
- Black in color
- Rough sizes 5", 8", 10", 12", and spring fit 2" to 5" diameter

WIRE STRAINERS

Bird cage wire strainers of 15-17 gauge wire most suitably configured to fit gutter downspouts where position is contained and not susceptible to easy displacement.



These are basically a lighter duty leaf guard style strainer. Also available in Copper.

DRAINS FOR ALL APPLICATIONS

Replacement Rings & Domes also available for JR Smith, Josam, Wade & Zurn Drains
Call Marathon Roofing Products for Details.

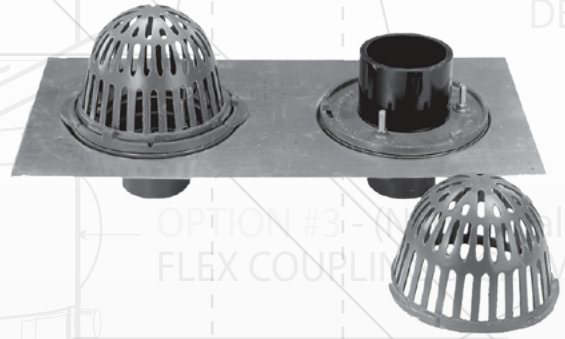
CAST IRON & ALUMINUM STRAINERS



These rigid, durable strainer domes are fabricated of cast aluminum or cast iron. Some units are attached by twist 'n lock action. Others are attached by the bolt down means and are best suited for use on school roofs and other applications where security of drain openings is a concern. Selected models are available in bronze metal. Available Sizes 5", 8", 10", 10" Low Profile and 12".

THIS IS A FULL SCALE HALF TEMPLATE OF THE BOLT DOWN BASE RING TO MEASURE ITS VERSATILITY & FIT TO YOUR REQUIRED APPLICATION

OVERFLOW DRAIN GUARD SYSTEM

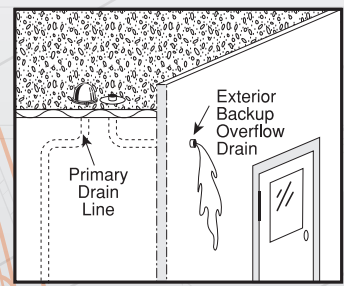


Roof Drain Combinations for Building & Roof Protection

- Heavy Duty Cast Iron Drains
- Sizes 2", 3", 4" and 6"
- Must Be Plumbed Separately
- Primary Drain Normal Outflow
- Overflow Drain Outfitted with an Adjustable Internal Water Dam

Overflow drain combinations guard against roof hazards caused by plugged roof drains. primary drains are plumbed normally. Overflow drains must be plumbed separately, preferable to an exterior side wall, where any water flows would alert to a roof drainage problem.

Overflow drains have an adjustable water dam, which is set to a height above the primary drain, thereby functioning only when roof water accumulates due to blocked or faulty primary drains.



Cutaway: exterior of building to show drain function.

SPACING DIMENSION
SPACING DIMENSION

RETROFIT RING & DOME

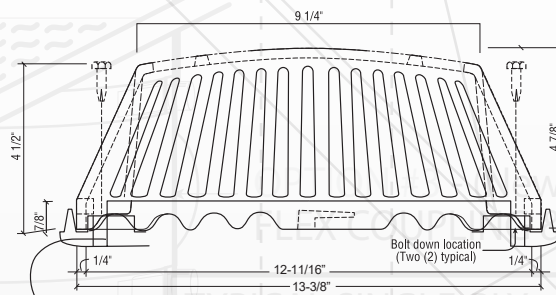
Versatile, Easy & Quick Replacement for Broken or Missing Roof Drain Domes & Rings

Aluminum Retrofit Ring & Dome



- Strong Aluminum Ring & Dome
- Low Profile Dome w/ Bolt Down Security
- 3 or 4 bolt Patterns

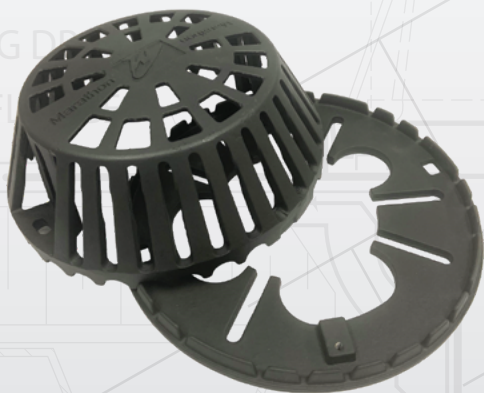
Strainer Elevation



Line represents section of base ring showing location of 5/16" tapped hole for bolt down of strainer.

NEW!

Cast Iron Retrofit Ring & Dome



- Heavy Duty Cast Iron Ring & Dome
- Weighs 21 lbs.
- Low Profile Dome w/ Bolt Down Security
- 3 or 4 Bolt Patterns

Bolt Down Base Ring

