



## PROLINER™

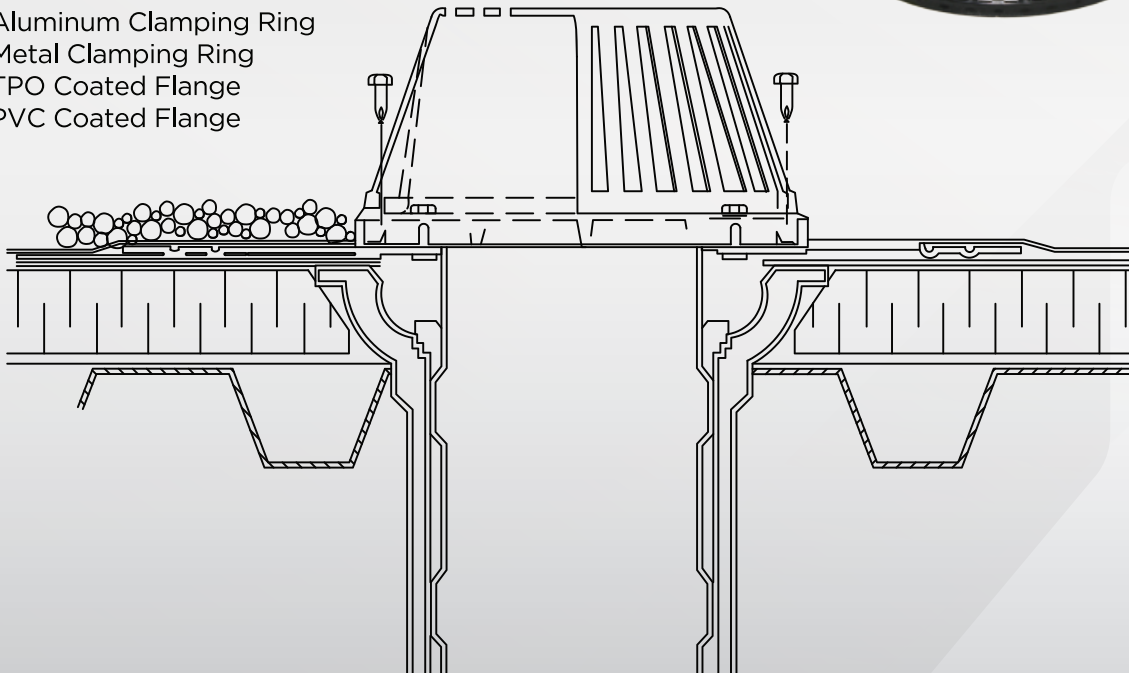


### Features

- Heavy Duty, Durable, Long Lasting Copper/ Malleable Alloy
- Multiple Seals to Prevent Water Back-Up
- Large 3 Bolt Polyethylene Strainer
- Bolt Down ABS Clamping Ring for Single-Ply Systems
- Available in Sizes 3", 4", 5" & 6"
- Non Standard Sizes 2.5", 3.5", 4.5" & 5.5"
- Available with No Clamping Ring

### Options/Accessories

- Smooth Flange (No Clamping Ring)
- Aluminum Strainer
- 2-3/4" Low Profile Aluminum Strainer
- Cast Iron Strainer
- Aluminum Clamping Ring
- Metal Clamping Ring
- TPO Coated Flange
- PVC Coated Flange

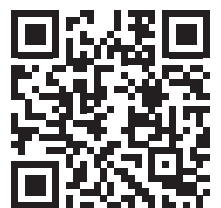


Made of 20 oz. copper flange and malleable alloy outlet, the Proliner™ roof drain is the only drain in the industry that provides multiple seals for water back-up prevention.



PVC Coating  
Only

Scan for Full  
Product Details!



800.828.8424  
marathondrains.com

# FDR Re-Roofing Projects

## Straight Drain with Clamping Ring

Use applications where direct mechanical pressure is required by a clamping ring to provide additional bonding of membrane to drain and roof deck. Ring is made of Heavy Duty rigid material and secured in place by six bolts and nuts equally tightened to provide consistent pressure to secure the membrane.

**Note:** Clamping ring option is recommended for single ply systems.

Order drain by catalog number found in chart below and add suffix giving flange surface option based on re-roofing system being roofing system being used: PRIMED for BUR and Modified Bitumen. PVC COATED for BUR and Modified Bitumen. PVC COATED for PVC and other thermo plastic systems.

**For Example:** If the existing drain pipe is 3" and there roof system is EPDM, the order code would be PS3CR PLAIN

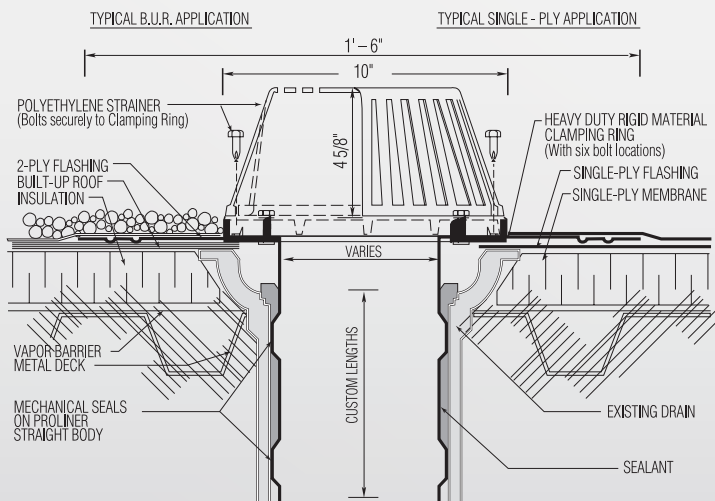
### Standard Sized Drains:

Cat #	Fits Existing Drain Pipe I.D.	Drain O.D.
PS2CR	1 7/8" - 2 1/4"	1 3/4"
PS3CR	2 7/8" - 3 1/4"	2 13/16"
PS4CR	3 7/8" - 4 1/4"	3 13/16"
PS5CR	4 7/8" - 5 1/4"	4 13/16"
PS6CR	5 7/8" - 6 1/4"	5 13/16"

### Non-Standard Sized Drains:

Cat #	Fits Existing Drain Pipe I.D.	Drain O.D.
PS200CR	2 1/4" - 2 5/8"	2 1/8"
PS300CR	3 1/4" - 3 5/8"	3 1/8"
PS400CR	4 1/4" - 4 5/8"	4 1/8"
PS500CR	5 1/4" - 5 5/8"	5 1/8"

**Note:** Lengths up to 18" available. To specify, add 18 after code (e.g. PS318CR Primed). Dimensions beyond standard Proliner 12" outlet require use of our Proliner Tool Depth Extender (not pictured).



**Note:** Proliner outlet shows expansions made by Proliner installation tool.

## Straight Drain

Most common style. Use when bowl is too small for funnel profile or when there is only a leader pipe. Suitable for most applications. Wide drain flange offers extra bonding area for routine installations. Variable length outlets are available to suit unusual job site circumstances.

**Note:** Only the Proliner Drain System

Order drain by catalog no. found in chart below and flange surface option based on re-used: PRIMED for PLAIN (no prime) for EPDM. PVC and other thermo plastic systems. PLAIN (no prime) for EPDM.

**For Example:** If the existing drain pipe is 3" and there is PVC, the order code would be PS3 PVC COATED.

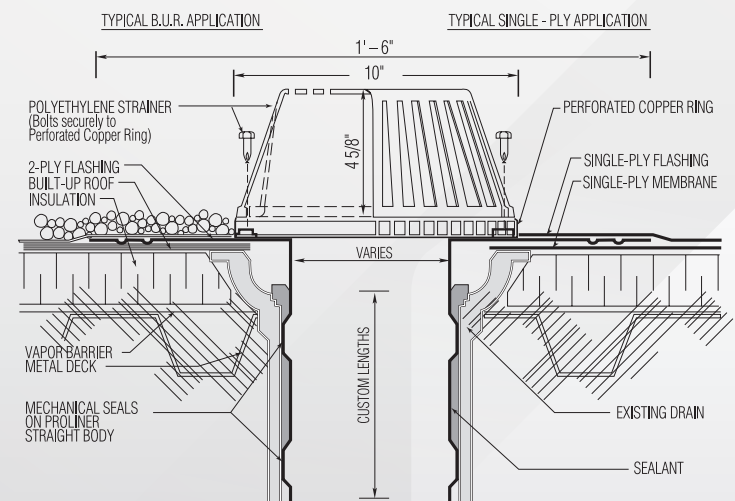
### Standard Sized Drains:

Cat #	Fits Existing Drain Pipe I.D.	Drain O.D.
PS2	1 7/8" - 2 1/4"	1 3/4"
PS3	2 7/8" - 3 1/4"	2 13/16"
PS4	3 7/8" - 4 1/4"	3 13/16"
PS5	4 7/8" - 5 1/4"	4 13/16"
PS6	5 7/8" - 6 1/4"	5 13/16"

### Non-Standard Sized Drains:

Cat #	Fits Existing Drain Pipe I.D.	Drain O.D.
PS200	2 1/4" - 2 5/8"	2 1/8"
PS300	3 1/4" - 3 5/8"	3 1/8"
PS400	4 1/4" - 4 5/8"	4 1/8"
PS500	5 1/4" - 5 5/8"	5 1/8"

**Note:** Lengths up to 18" available. To specify, add 18 after code (e.g. PS318 PVC Coated). Dimensions beyond standard Proliner 12" outlet require use of our Proliner Tool Depth Extender (not pictured).



**Note:** Proliner outlet shows expansions made by Proliner installation tool.