



**When it rains,
Marathon shines!**

PRODUCT LINE CARD



**DRAINS
VENTS & BREATHERS
DRAIN REPLACEMENT PARTS
ACCESSORIES
ROOFING & SHEET METAL EQUIPMENT
SAFETY**



Commercial Drain Specialists
Drains • Vents • Drain Replacement Parts • Accessories • Equipment

800.828.8424
marathondrains.com

About Us

Marathon Roofing Products was started in Buffalo, NY in 1966 as a small scale manufacturer of copper drains. Since those humble beginnings, we have expanded significantly. In 2008, Marathon Roofing Products moved to a new 30,000 square foot facility in Orchard Park, NY to help support their continued growth.

As a privately held company, we ensure you will continue to receive the personal service you have grown accustomed to for six decades. As Owner and President of Marathon Roofing Products, I have made it my mission to be certain that our customers continue to receive top notch customer service regardless of the growth we experience. Our continued efforts to create long standing relationships with our customers and the company's reputation for quality products and service will ensure our vitality for years to come.

Tod Ciso
President, Marathon Roofing Products, Inc.

Why Choose Us?

Ranked as one of the nation's leaders in manufacturing and distribution of quality commercial roof drains, vents, equipment and accessories worldwide. Marathon Roofing Products is committed to supplying its customers with quality products at competitive prices while providing the best customer service in the industry.

- INDUSTRY LEADING CUSTOMER SERVICE & INNOVATION**
- FASTEST MANUFACTURING & SHIPPING LEAD TIMES IN THE INDUSTRY**
- OFFERS COMPLETE CUSTOM DRAIN MANUFACTURING**



800.828.8424



orders@marathondrains.com



marathondrains.com

All-Aluminum
Retrofit Roof Drain

ALUMINATOR™

Engineered for Performance
& **BUILT TO LAST**



Certified to conform with
Plumbing
Standards



POSEIDON

100% Stainless Steel

*Salt is
no match
for the power
of Poseidon...*

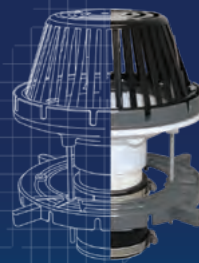


COPPER-TITE™

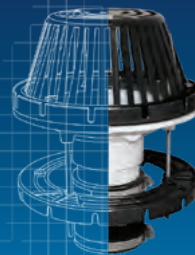
COPPER for
longevity,
TITE for a
water tight fit.



NEW Name. **NEW** Features.
NEW Price. **SAME** Trusted Quality.



MARApak+
NEW Installation PVC Drain
w/ Metal Ring & Underdeck Clamp



MARApak
NEW Installation PVC Drain
w/ ABS Ring & Underdeck Clamp



MARAdrain
NEW Installation PVC Drain
w/ ABS Clamping Ring

All Aluminum Drain





- Aluminum Body
- Aluminum Ring & Dome
- 2" - 10" Sizes
- .5" Sizes Supplied with Tape Seal
- 16" Diameter Flange
- 12" Long Outlet Length
- Proseal Rubber Mechanical Seal
- Options: PVC or TPO Coated Flange



POSEIDON



- Stainless Steel Body
- Stainless Steel Ring & Dome
- 3" - 6" Sizes
- 16" Diameter Flange
- 12" Long Outlet Length
- Proseal Rubber Mechanical Seal
- Options: PVC or TPO Coated Flange




- Copper Body
- Plastic Ring & Dome
- 2" - 12" Sizes
- .5" Sizes Available
- 14" or 18" Diameter Flange
- 9" Long Outlet Length
- Tape Seal
- Options: PVC or TPO Coated Flange
- Customizable Sizes & Options

2", 8" & 10" PROMAXX ALUMINATOR



Same Features as the Aluminator, but with ProMaxx Rubber Seal

ONLY 2", 8" & 10" Mechanical Seal in the Industry

ProMaxx Seal requires specific sized ProMaxx Tool

- Options: PVC or TPO Coated Flange

ALUMINUM GUTTER DRAIN



- Aluminum Body
- Aluminum Dome or Stainless Steel Flatgrate
- 5" x 5" SS Clamping Ring
- 3" & 4" Sizes
- 8" x 8" Flange
- 12" Long Outlet Length
- Proseal Rubber Mechanical Seal or Tape Seal
- Options: PVC or TPO Coated Flange

LEAD SLEEVE PROLINER DRAIN




- Copper Flange
- Lead Sleeve
- Plastic Ring & Dome
- 2" - 6" Sizes
- 18" Copper Diameter
- 12" Long Lead Outlet Flange
- Expanding Tool
- Options: PVC or TPO Coated Flange

ECONOMY ALUMINUM



- Aluminum Body
- Aluminum Dome
- No Clamping Ring
- No Tape Seal
- Options: PVC or TPO Coated Flange

ALUMINUM FAST FLOW



- Aluminum Body
- Plastic Ring & Dome
- 2" - 10" Sizes
- .5" Sizes Available
- 16" Diameter Flange
- 12" Long Outlet Length
- Tape Seal
- Options: PVC or TPO Coated Flange

ALUMINATOR WELD - TPO or PVC



- Aluminum Body
- Aluminum Dome
- No Clamping Ring
- 3" - 6" Sizes
- 16" Diameter Flange
- 12" Long Outlet Length
- Proseal Rubber Mechanical Seal
- Options: PVC or TPO Coated Flange

ALUMINATOR PRO

Same Features as the Aluminator, but with:



- Powder Coated Aluminum Ring & Dome
- Dome Features Removable Lid
- Options: PVC or TPO Coated Flange

ALUMINATOR EXTENDED LENGTH

Same Features as the Aluminator Drain, but with:



- 22" Long Outlet Length (Plus 2" w/ Seal)
- Options: PVC or TPO Coated Flange

ALUMINUM SCUPPER



- Aluminum Body
- Cast Iron Clamping Ring & Strainer
- 3" & 4" Sizes
- 90° Flange
- Proseal Rubber Mechanical Seal
- Options: TPO Coated
- Other Sizes Available in Copper

8" PROMAXX ALUMINATOR



- 8" Retrofit Drain
- Aluminum Body
- Aluminum Ring & Dome
- 16" Diameter Flange
- 12" Long Outlet Length
- ProMaxx Seal or Tape Seal
- Options: PVC or TPO Coated Flange

10" PROMAXX ALUMINATOR



- 10" Retrofit Drain
- 10" Aluminum Dome
- 14" Aluminum Clamping Ring
- 18" Diameter Flange
- 12" Long Outlet Length
- ProMaxx Seal or Tape Seal
- Options: PVC or TPO Coated Flange

PLASTIC DURA DRAIN

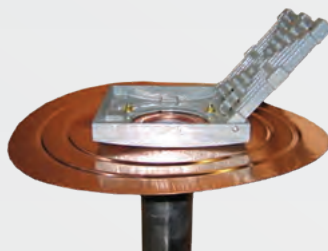
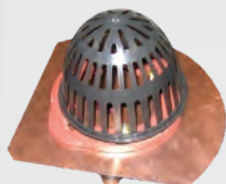


- Thermoplastic Rubber
- Plastic Dome Available
- 2" - 6" Sizes
- Compatible w/ BUR Modified & EPDM
- Scupper Drains Available

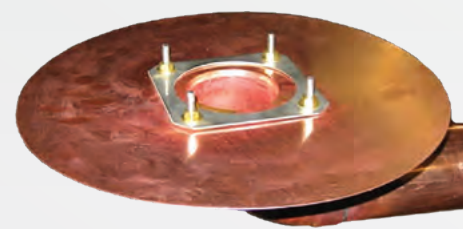
CUSTOM

SPECIAL DRAINS

**WE ARE ABLE TO
MAKE ANY CUSTOM
SPECIAL DRAIN!**



**Give us a call
to discuss!**



***The ONLY 2", 8" & 10" Retrofit Drain
with Mechanical Seal in the Industry!!!***



SCAN FOR
ALL FEATURES



800.828.8424 • MARATHONDRAINS.COM

ALUMINUM

ALUMINUM FAST FLOW



- Heavy Duty Spun Aluminum Body
- Plastic Ring & Dome
- 16" Diameter Flange
- 12" Long Outlet Length
- Options: PVC or TPO Coating Available

COPPER

CENTURY



- Copper Body
- Plastic Ring & Dome
- 14" (Economy) 18" (Premium) Diameter Flange
- 9" Long Outlet Length
- Options: PVC or TPO Coating Available

SIDE OUTLET COPPER



- Copper Body
- Plastic Ring & Dome
- 90° Outlet
- 14" or 18" Diameter Flange
- Options: PVC or TPO Coating Available

PVC

MARApak+



- PVC Body
- Metal Clamping Ring
- Metal Underdeck Clamp
- Plastic Dome
- 2" - 6" Sizes

MARApak



- PVC Body
- ABS Clamping Ring
- ABS Underdeck Clamp
- Plastic Dome
- 2" - 6" Sizes


MARAdrain



- PVC Body
- ABS or Metal Clamping Ring
- Plastic Strainer
- Reinforced Gussets

Options & Upgrades Available!

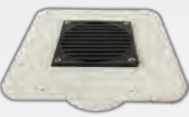
FAST PAK



- PVC or Cast Iron Body
- UV Stabilized for Longevity
- Flexible Rubber Expansion Coupling
- Roof Top Mounting for Easy Installation
- Options Available

WARNING: Cancer and Reproductive Harm. www.P65Warnings.ca.gov

ECONOMY PVC DRAIN



- 4" Direct Connect No Hub PVC Body
- 8-1/2" x 8-1/2" Flange
- 4-3/8" x 4-3/8" Flat Plastic Grate
- Options Available

WARNING: Cancer and Reproductive Harm. www.P65Warnings.ca.gov

CAST IRON

<h3>CAST-PAK</h3>  <ul style="list-style-type: none"> • Cast Iron Body • Complete Kit • 3" - 10" Sizes • Options Available 	<h3>SMALL AREA - RD-200</h3>  <ul style="list-style-type: none"> • Cast Iron Body • Metal Ring & Plastic Dome • 2" - 4" Sizes • Options Available 	<h3>XL AREA - RD-300</h3>  <ul style="list-style-type: none"> • Cast Iron Body • Metal Ring & Plastic Dome • 3" - 10" Sizes • Options Available
<h3>RD-700 DUAL OVERFLOW DRAIN</h3>  <ul style="list-style-type: none"> • Cast Iron Body • Secured Ductile Iron Dome • Reliable Drainage & Overflow • No Hub Outlets • Options Available 	<h3>RD-27 SCUPPER - RD-270</h3>  <ul style="list-style-type: none"> • Cast Iron Body • Angled Grate • 2" - 6" Sizes • Options Available 	<h3>RD-250 - ONE PIECE</h3>  <ul style="list-style-type: none"> • Cast Iron Body • Cast Iron Ring & Dome • 2" - 4" Sizes • Main Drain & Overflow Drain • Options Available
<h3>RD-280 - ONE PIECE</h3>  <ul style="list-style-type: none"> • Cast Iron Body • Cast Iron Ring & Dome • 2" - 4" Sizes • Options Available 	<h3>RD-280-SO SIDE OUTLET</h3>  <ul style="list-style-type: none"> • Cast Iron Body • Cast Iron Ring & Dome • 2" - 4" Sizes • Options Available 	<h3>RD-260 - COMBO OVERFLOW</h3>  <ul style="list-style-type: none"> • Cast Iron Body • Cast Iron Ring & Plastic Dome • Galvanized Pan 12" x 24" • 2" - 4" Sizes • Main Drain & Overflow Drain • Underdeck Clamps • Options Available




- All Aluminum
- 4" Size
- One Way or Two Way
- Removes Moisture & Pressure
- Options: PVC or TPO Coating Available




HDPE (Black)



PVC or TPO (White)

- One Way or Two Way
- Locking, Vandal-Proof Cap
- Options: PVC, TPO or EPDM Coating Available

WARNING
Cancer and
Reproductive Harm
www.P65Warnings.ca.gov

ALUMINUM

INSULVENT



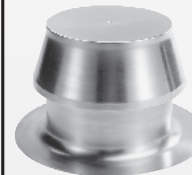
- All Aluminum
- 4" Size
- One Way or Two Way
- Removes Moisture & Pressure
- Options: PVC or TPO Coating Available

MC



- All Aluminum
- 6" Size
- One Way or Two Way
- Removes Moisture & Pressure
- Options: PVC or TPO Coating Available

LC



- All Aluminum
- 8" Size
- One Way or Two Way
- Removes Moisture & Pressure
- Options: PVC or TPO Coating Available

XLC



- All Aluminum
- 12" Size
- One Way or Two Way
- Removes Moisture & Pressure
- Options: PVC or TPO Coating Available

SOL-A-VENT



- Aluminum Base
- Solar Powered
- Removes Moisture & Pressure
- Options: PVC or TPO Coating Available
- Commercial or Residential Applications

WARNING
Cancer and
Reproductive Harm
www.P65Warnings.ca.gov

HIGH SECURITY



- All Aluminum
- Secures Plumbing Vent Stacks to Reduce Vandalism
- Options: PVC or TPO Coating Available

ROOF NEK



- Aluminum Base Standpipe
- Solvent Welded PVC Hooded Outlet
- Water Tight Conduit System
- Easily Flashed with Roof
- 3 Cable Openings
- Options: PVC or TPO Coating Available

WARNING
Cancer and
Reproductive Harm
www.P65Warnings.ca.gov

PLASTIC (HDPE, PVC & TPO)

EX FLOW & M-105



- One Way or Two Way
- Locking, Vandal-Proof
- Options: PVC, TPO or EPDM Coating Available

WARNING
Cancer and
Reproductive Harm
www.P65Warnings.ca.gov

PREVENT



- Heavy Duty PVC
- Pre-Drilled Flange
- One Way or Two Way
- Insect Resistant Screen
- Vandal Proof

WARNING
Cancer and
Reproductive Harm
www.P65Warnings.ca.gov

DRAIN REPLACEMENT PARTS

STRAINERS



Wide Range of Replacement Styles & Sizes

- Plastic, Aluminum & Cast Iron
- 5" - 18" Dome Sizes

ADJUSTABLE DRAIN GUARDS



- Sized to Fit All Openings
- Block Out Stones & Debris
 - Aluminum Dome
 - Stainless Steel Hardware
 - 5", 8", 10", 13" & 18" Dome Sizes
- Cast Iron & Stainless Steel Options Available

RETRO RING & DOME



- Aluminum & Cast Iron
- Versatile Replacement
- Maximum Drainage
- Bolt Down Security
- Fits 6-1/2" to 11-3/4" Bolt to Bolt
- Fits 3 & 4 Bolt Patterns
- V Channel Scallop

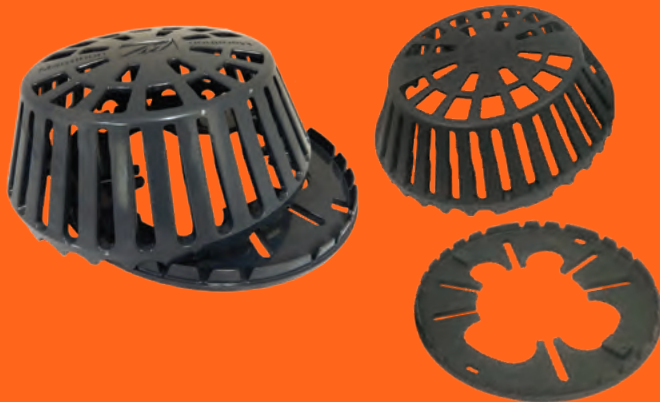
CLAMPING RINGS



Wide Range of Replacement Styles & Sizes

- Plastic, Aluminum & Cast Iron
- Various Sizes

RETRO RING & DOME



- Aluminum & Cast Iron
- Versatile Replacement
- Maximum Drainage
- Bolt Down Security
- Fits 6-1/2" to 11-3/4" Bolt to Bolt
- Fits 3 & 4 Bolt Patterns
- V Channel Scallop

**ONLY ONE
AVAILABLE
IN THE
INDUSTRY!**

CONTACT US FOR MORE INFORMATION

800.828.8424 • MARATHONDRAINS.COM

ACCESSORIES & SPECIALTY PRODUCTS

<p>MARABOOT</p>  <ul style="list-style-type: none"> • Aluminum Base • EPDM Rubber Boot • 1/4" to 1" Pipe Sizes • SS Clamps • 14" Diameter Flange • 9" Tall • Options: PVC or TPO 	<p>UNIBOOT</p>  <ul style="list-style-type: none"> • 6-1/4" Aluminum Base • EPDM Rubber Cap • Stainless Steel Clamps • Two Steel Bands • 3" - 7" Pipe Sizes • 14" Flange • 9-3/4" Tall • 8" Diameter Stack • Options: PVC or TPO 	<p>PREMIUM DEKTITES</p>  <ul style="list-style-type: none"> • Premium & Retrofit • Flash Hot or Cold Flues on Metal Roofs • Highly Durable EPDM Cone & Base • Edged w/ Flexible Aluminum Strip • Available in Many Sizes
<p>MARA-FLEX FLASHING</p>  <ul style="list-style-type: none"> • Lead Flashing • Available in Many Sizes • 12" X 12" X 12" - 2.5# or 4# • Lead Sheets Available • Pitched Available 	<p>CLAMP POSTS</p>  <ul style="list-style-type: none"> • Josam Clamp Posts • 2-1/2" & 4" Long Sizes • Qty 4 Posts & Screws per Kit 	
<p>RUBBER COUPLINGS</p>  <ul style="list-style-type: none"> • Flexible • Stainless Steel Clamps • 3/4" - 27" Sizes • Leak-Proof • Resistant to Chemicals & Ultraviolet Rays 		<p>RD-230 - SIDE OUTLET</p>  <ul style="list-style-type: none"> • Cast Iron • Cast Iron Ring • Cast Nickel Bronze Dome • 2" - 4" Sizes • IPS Threaded Outlet
<p>RD-240 - BOTTOM OUTLET</p>  <ul style="list-style-type: none"> • Cast Iron • Cast Iron Ring • Cast Nickel Bronze Dome • 2" - 4" Sizes • IPS Threaded Outlet 	<p>RD-680 - VENT CAPS</p>  <ul style="list-style-type: none"> • Cast Iron • Universal 2" - 4" Sizes • 6" & 8" Sizes 	<p>RD-940 - DOWNSPOUT NOZZLES</p>  <ul style="list-style-type: none"> • Cast Nickel Bronze • 2" - 12" Sizes • Available in No Hub, Threaded & Push On • Downspout Covers & SS Bird Screens Available • Options Available
<p>PLASTIC DOWNSPOUT</p>  <ul style="list-style-type: none"> • Plastic • 2" - 12" Sizes • Available in No Hub, Threaded & Push On • Downspout Covers & SS Bird Screens Available • Options Available 	<p>WALLFLOWERS</p>  <ul style="list-style-type: none"> • Powder-Coated Cast Aluminum • Universal Gasketed Connection • Vandal-Resistant • Built-in Hinged Bird Screen • 3", 4", 6" & 8" Sizes 	
		<p>RD-950 - DOWNSPOUT COVER</p>  <ul style="list-style-type: none"> • Stainless Steel • Perforated Hinged Strainer • Securing Flange • Options Available

CAN'T FIND WHAT YOU NEED? JUST ASK US!

800.828.8424 • MARATHONDRAINS.COM

SAFETY

SAFETY FALL PROTECTION	SAFETY FALL PROTECTION	FALL ARREST HARNESS
 <ul style="list-style-type: none"> • OSHA Approved • Perimeter Warning & Guardrail Systems • Temporary & Portable 	 <p>Full Line of Safety Fall Protection Systems for All Types of Applications</p>	 <p>Available in Various Sizes & Options</p>
FALL ARREST HARNESS		
 <p>Available in 25' & 50'. This is a complete all-in-one kit for fall protection. It includes a harness, rope grab with a 2' energy absorber, anchorage connector and a 25' or 50' lifeline all housed in a 5 gallon storage pail. The kit is fully customizable with a variety of rope lengths and anchor options, and is ideal for nearly any roofing job.</p>		

EQUIPMENT

ON DECK EQUIPMENT	ROOF HATCH
	 <ul style="list-style-type: none"> • Roof Cutters • Planers • Sweepers • Roof Peelers • Spreaders • Cutter Blades
4 WHEEL CART	SEAM ROLLERS
	 <ul style="list-style-type: none"> • Various Sizes Available • Silicone, Steel, Threaded, Ergonomic, Seam Probes, Penny Rollers & Stand-Up Rollers
BENDING & FORMING TOOLS	CORE CUTTERS
 <p>For HVAC - Folding Tools & Hand Seamers Available in Various Sizes</p>	 <p>Specialty Tool Designed to Take Roof Test Cuts Easily & Efficiently. Available in 2" & 3"</p>
TRASH HOPPER & CHUTES	MISC. ITEMS
 <p>Remove Trash Effectively & Safely</p>	 <ul style="list-style-type: none"> • Drum Heaters • Pipe Flashings • Slag Pushers • Lead Flashings & Sheets
GANG SLITTER	
  <ul style="list-style-type: none"> • Cuts Material 30 to 16 Gauge • 48" Wide Sheet Capacity • Steel Knives • 115 Volts 1/3 HP Electric Motor 	

PEDESTAL & PAVER SYSTEMS

FOR ANY

OUTDOOR LIVING AREA



CHECK OUT OUR NEW FEATURE!

Roomvo Technology
Visualizer

=====

VISUALIZE YOUR SPACE WITH OUR PRODUCTS!

[Get Started!](#)

MRP

SUPPORTS


800.828.8424 • www.mrpsupports.com



Pedestals




Green Roof

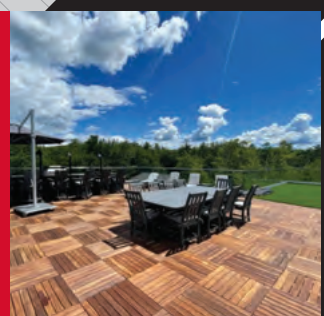
Decking




Pavers
Concrete
Porcelain
Rubber




Deck Tiles
Wood





**When it rains,
Marathon shines.**

Commercial Drain Specialists
Drains • Vents • Drain Replacement Parts • Accessories • Equipment

800.828.8424
marathondrains.com