

Tod Visits Prior Owner in Ontario Canada

Marathon Companies owner, Tod Cislo and wife Tina ventured up to Caledon Ontario, about an hour north of Toronto, to visit with the previous owner of Marathon, Doug Rowan & his wife Jane. It was a glorious day in which they hosted us at their beautiful home in the country. There place has been a culmination of almost 50 years of developing a property. Their gardens were spectacular and in full bloom during our visit. The uniqueness of their gardens and some of the displays are truly inspiring. One that stands out was a work in progress that included a large ornate birdcage upwards of 8-10ft tall that they attained in their travels in the Carolinas. Once this new rock formation is in place and the cage is placed it will be an amazing addition to a lifetime of work. Another thing that stood out as well is their love for owls. If you pay attention, they are placed all over the property in different forms. It was an amazing experience and more importantly a great visit. We are happy to have the opportunity to visit. Doug is now in his early 80's and just keeps rocking. A fun fact is that his Mom is still around at 106 years young. Tod jokingly mentioned to his team, "I see where Doug gets his drive."



UPCOMING EVENTS:

June 5 - 7, 2024
Florida Roofing Show
(FRSA) Booth # 425
Orlando, FL

June 27 - 28, 2024
Carolina Roofing Show
(CRSMCA) Booth # 39 - 42
Myrtle Beach, SC

Sept 30 - Oct 1
Western States Roofing Show
(WSRCA) Booth # 114
Las Vegas, NV



When it Rains...Marathon Shines!

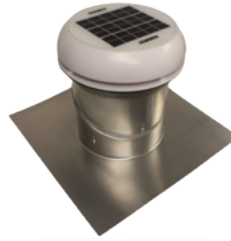
<<< Scan to View our NEW Product Line Card!





PREVENT

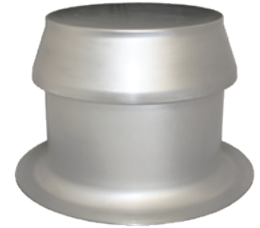
- Super heavy duty PVC plastic for long life
- Exclusive one-way valve design to prevent moisture from re-entering the roof system
- Special insect resistant wire screen
- Vandal proof
- Pre-drilled flange for fastening to roof deck



COMMERCIAL & RESIDENTIAL SOL-A-VENT:

- Positive venting rain or shine
- Continuous, non-stop exhaust flow day or night
- Solar powered
- Maximized air flow

Trouble-free installation and durable materials let you rest easy. Materials used in the design withstand wind-blown water, intense sunlight and other corrosive and abrasive conditions. The solar cell and motor are hermetically sealed to keep out moisture.

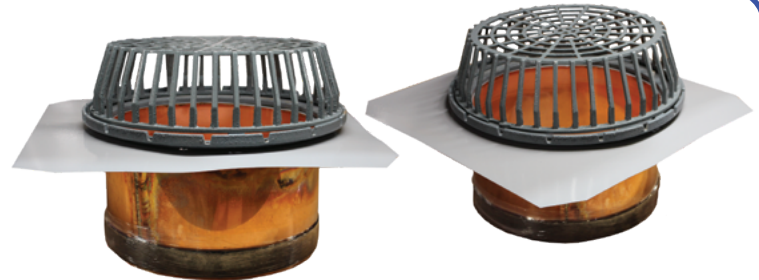


XLC VENT

- Aluminum Vents available in sizes of 4, 6", 8" and 12"
- Available in One Way & Two Way
- Provides pressure equalization
- Spun from heavy gauge aluminum
- Provides venting for all types of insulation
- Extra wide base opening
- Vandal proof cap
- Simple & easy to install

CUSTOM DRAIN

We were tasked by a customer to create this custom drain for their rooftop! Coppertite 16" Drain x 9" Long with Cast Iron Ring & Dome. The flange was TPO Coated. ***Give us a call at 716-332-7673 to request any custom drain for your roofing needs***



EMPLOYEE SPOTLIGHT: CHRISTOPHER CORNIER

Chris started with Marathon in April 2023 and over that year he has expanded our marketing initiatives that include social media, newsletters, e-mail campaigns, website management, events and much more. His hobbies include volleyball, basketball, kickball, fantasy football and painting. Chris also recently celebrated his 30th birthday over this Memorial day weekend at the MoonDance Cat with approximately 50 guests on ship. Family and friends came out to celebrate on a beautiful day to sail along Lake Erie. " I have been honored to be apart of this great organization that has welcomed me with open arms into the family culture. I believe this brand with the people and endless stories we have will continue to grow endlessly. I am looking forward to having a lasting impact on the people around me assisting with the growth of the Marathon Companies"

