



**When it rains,
Marathon shines.**

DIRECT CONNECT

NEW Installation Drains



Commercial Drain Specialists

Drains • Vents • Drain Replacement Parts • Accessories • Equipment

800.828.8424

marathondrains.com

MARApak

This PVC new installation/direct connect roof drain comes with all the necessary components for a quick and easy installation. It provides the essential features of more expensive roof drains at an affordable price. It comes with a plastic clamping ring and underdeck clamp. It is adaptable to most generic materials of single ply and conventional built-up roofing for use with roof decks of steel, wood, precast concrete or gypsum making it a versatile, economic and easy to install roof drain.

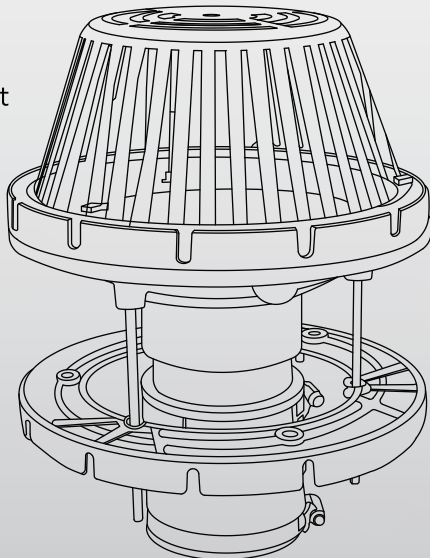


Features

- **Newly Designed** - Injection Molded PVC Drain Body with Reinforced Gussets to Increase Strength
- **Newly Designed** - Ability to Create an Overflow Drain by Inserting a PVC Pipe at Top of Drain Body
- **Newly Designed** - Grooves Added to Drain Body for a Tighter Fit between Clamping Ring & the Drain Body
- 10" Molded Polyethylene Strainer Bolts to Clamping Ring
- Plastic Clamping Ring with Gravel Stop
- Plastic Under-Deck Clamp
- UV Stabilized for Long Life
- Flexible Rubber Expansion Coupling (*Used to Connect Drain to Drain Pipe*)

Options/Accessories

- Aluminum Strainer
- 2-3/4" Low Profile Aluminum Strainer
- Cast Iron Strainer
- Extension Flange
- Bearing Pan
- 2" Overflow Dam
- PVC Overflow Insert
- Available in 2", 3", 4" & 6"



PVC Coating
Only

MARApak+

This PVC new installation/direct connect roof drain comes with all the necessary components for a quick and easy installation. It provides the essential features of more expensive roof drains at an affordable price with upgraded metal clamping ring and under-deck clamp. It is adaptable to most generic materials of single ply and conventional built-up roofing for use with roof decks of steel, wood, precast concrete or gypsum making it a versatile, economic and easy to install roof drain.



Features

- **Same Newly Designed** features as the MaraPak
- 10" Molded Polyethylene Strainer Bolts to Clamping Ring
- Metal Clamping Ring with Gravel Stop
- Metal Under-Deck Clamp
- UV Stabilized for Long Life
- Flexible Rubber Expansion Coupling (*Used to Connect Drain to Drain Pipe*)

MARAdrain

This PVC new installation/direct connect roof drain comes with all the necessary components for a quick and easy installation. It provides the essential features of more expensive roof drains at an affordable price. This comes with a PVC Body, plastic or metal clamping ring and plastic strainer. It is adaptable to most generic materials of single ply and conventional built-up roofing for use with roof decks of steel, wood, precast concrete or gypsum making it a versatile, economic and easy to install roof drain.



Features

- **Same Newly Designed** features as the MaraPak
- 10" Molded Polyethylene Strainer Bolts to Clamping Ring
- Plastic or Metal Clamping Ring with Gravel Stop
- UV Stabilized for Long Life

FAST[™] pak

The Fast Pak[™] series provides a quick-install rooftop drain solution that requires no access below the roof deck. Ideal for both retrofits and new builds, it's compatible with single-ply and built-up roofs, and fits steel, wood, concrete, or gypsum decks.



Features

- injection Molded PVC or Cast Iron Drain Body
- Galvanized 18" X 18" Extension/Bearing Flange for Strength & Stability
- Molded Polyethylene Strainer, Bolts to Clamping Ring
- Metal Clamping Ring with Integral Gravel Stop
- Flexible Rubber Expansion Coupling for Secure Connection
- UV-Stabilized Components for Long-Term Durability
- Options: Outlet Sizes:
 - Fast Pak[™] PVC: 2", 3", & 4"
 - Fast Pak[™] Cast Iron: 3", 4"

CAST[™] pak

The Cast Pak[™] roof drain delivers key features of high-performance cast iron drains at a cost-effective price. With an epoxy-coated body, it suits single-ply and built-up roofs, installs on various deck types, and supports both new builds and retrofits with multiple outlet and sealing options.



Features

- Epoxy-Coated Cast Iron Drain Body
- Molded Polyethylene Dome Strainer, Bolts Securely to Clamping Ring
- Epoxy-Coated Metal Clamping Ring with Gravel Stop
- Grooved for Positive Drainage on Smooth Roof Surfaces
- Metal Underdeck Clamp Included for Secure Mechanical Fastening
- Flexible Rubber Expansion Coupling Connects to PVC or Cast Iron Pipe
- UV-Stabilized, Corrosion-Resistant Components
- Options: Outlet Sizes: 3", 4", 6", 8", & 10"

Options/Accessories

- Aluminum or Cast Iron Strainer
- 2-3/4" Low Profile Aluminum Strainer
- Extension Flange
- Bearing Pan
- 2" Overflow Dam
- PVC Overflow Insert
- Available in 2", 3", 4" & 6"

XL BODY CAST IRON DRAINS

RD300

Epoxy coated cast iron overflow roof drain with flashing clamp with integral 2 inch (51mm) high external water dam, self-locking polyethylene dome (standard), and no hub (standard) outlet.



Features

- Engineered with Cast Iron for Long Life & Durability
- Self-Locking Polyethylene Dome & No Hub Outlet to Simplify Installation & Maintenance
- Flashing Clamp with Integral External Water Dam for Reliable Drainage

RD300W

Features

with Internal Standpipe

- Adjustable Internal Water Dam
- Self Locking Poly Dome
- Optional Push-On Outlet Shown



RD300R

Features

with 2" External Water Dam Overflow

- Self Locking Poly Dome
- No Hub Outlet



Options/Accessories

- Sump Receiver
- Underdeck Clamp
- Deck Flange/Adjustable Extension
- Aluminum Strainer
- Cast Iron Strainer
- Vandal Proof Strainer
- Available In 3", 4" & 6"



PVC Coating
Only

RD700

Epoxy coated cast iron dual outlet roof drain/overflow combination with flashing clamp, integral gravel stop, 2 inch high internal overflow standpipe, and secured ductile iron dome. Constructed to withstand climate and the rigors of long-term use.



Features

- Flashing Clamps With Integral Gravel Stop And Overflow Standpipe For Reliable Drainage And Overflow
- Secured Ductile Iron Dome Is Engineered To Last
- No Hub Outlets For Easy Installation
- Engineered With Cast Iron For Long Life And Durability

Options/Accessories

- Under-Deck Clamp
- Deck Flange/Adj. Extension
- 4" High Overflow
- Available In 3", 4" And 6"

ALUMINUM FAST FLOW

The fast flow roof drain can be utilized as both a retrofit and/or a new installation/direct connect drain. The fast flow roof drain is made up of a heavy gauge spun aluminum drain body, abs clamping ring (standard), polyethylene strainer (standard) and optional expanding tape to prevent water backflow issues.



Features

- Quick & Easy To Install
- Heavy Gauge Aluminum Drain Body
- ABS Clamping Ring Style For Single-Ply Systems
- Bolt In Place Polyethylene Strainer
- Expanding Tape to Prevent Water Back-Up Issues
- Available without Clamping Ring with 8" Polyethylene Strainer

Options/Accessories

- Aluminum Strainer
- 2-3/4" Low Profile Aluminum Strainer
- Cast Iron Strainer
- 2" Overflow Ring
- Metal Clamping Ring
- TPO or PVC Coated Flange
- Available In Sizes of 2", 3", 4", 5", 6" & 8"
- Available in Non-Standard Sizes Of - 2.5", 3.5" & 4.5"

PREMIUM CENTURY SERIES

Copper new installation / direct connect roof drain with 18" flange, ABS clamping ring and polyethylene strainer.



Features

- Quick & Easy to Install
- Adapts to All Types of Membranes & Roof Systems
- Provides Flexible Expansion Type Connections to Plumbing
- Positive Seal to Roof Membranes
- Constructed of 20 oz. Copper
- ABS Clamping Ring Style for Single-Ply Systems
- Bolt in Place Plastic Strainer

Options/Accessories

- Aluminum Strainer
- Aluminum Low Profile Strainer (2-3/4" Tall)
- Cast Iron Strainer
- Aluminum Clamping Ring
- Metal Clamping Ring
- TPO or PVC Coated Flange
- Available in Sizes of 2", 3", 4" & 6"
- Available in Non-Standard & Custom Sizes
- Available without Clamping Ring

ECONOMY CENTURY SERIES

Copper new installation / direct connect roof drain with 14" flange, ABS clamping ring and polyethylene strainer.



Features

- Quick & Easy to Install
- Adapts to All Types of Membranes & Roof Systems
- Provides Flexible Expansion Type Connections to Plumbing
- Positive Seal to Roof Membranes
- Constructed of 16oz. Copper
- ABS Clamping Ring Style For Single-Ply Systems
- Bolt In Place Plastic Strainer

Options/Accessories

- Same as Premium Century Series
- Available in sizes of 2", 3" & 4"



PVC Coating
Only

RD200

Epoxy coated cast iron roof drain with flashing clamp with integral gravel stop, self-locking polyethylene dome (standard) and no hub (standard) outlet. Constructed to withstand climate and the rigors of long-term use.



Features

- Engineered with Cast Iron for Long Life & Durability
- Self-Locking Polyethylene Dome & No Hub Outlet to Simplify Installation & Maintenance
- Flashing Clamp & Integral Gravel Stop Ensure Reliable Drainage

RD200R

Epoxy coated cast iron overflow roof drain with flashing clamp with integral 2 in. (51mm) high external water dam, self locking polyethylene dome, and no hub outlet.



Features

- Engineered with Cast Iron for Long Life & Durability
- Flashing Clamp & Integral 2" External Water Dam to Reduce Maintenance
- Self-Locking Polyethylene Dome & No Hub Outlet to Simplify Installation & Maintenance

Options/Accessories

- Sump Receiver
- Underdeck Clamp
- Deck Flange/Adjustable Extension
- Aluminum Strainer
- Cast Iron Strainer
- Vandal Proof Strainer
- Available in 2", 3" & 4"

RD-250

Cast iron combination roof drain/overflow with deck flange, drain body, flashing clamp with integral gravel guard, overflow standpipe with membrane clamp, self locking cast iron dome, and no hub outlets.



Features

- Deck Flange, Flashing Clamp, & Overflow Standpipe with Membrane Clamp for Reliable Drainage
- Drain Body & Self-Locking Cast Iron Dome
- Engineered with Cast Iron for Long Life & Durability
- No Hub Outlet for Easy Installation

Options/Accessories

- Vandal Proof Strainer
- Available in 2", 3" & 4"

RD260

Combination roof drain/overflow with epoxy coated cast iron drain bodies, flashing clamps with integral gravel guards, 4 in. (102mm) high internal standpipe, self locking polyethylene domes, under-deck clamp, 16" x 32" deck flange and no hub (standard) outlets. Constructed to withstand climate and the rigors of long-term use.



Features

- Self-locking polyethylene dome and no hub (standard) outlet simplify installation and maintenance
- Flashing clamps with integral gravel guards and standpipe help ensure reliable drainage and overflow
- Engineered with cast iron for long life and durability
- Under-deck clamp

Options/Accessories

- Push on
- Threaded outlet
- Cast iron strainer
- Aluminum strainer
- Vandal proof strainer
- Side outlet
- Available in 2", 3" and 4"

RD270

Epoxy coated cast iron scupper roof drain with flashing clamp, secured angle grate and no hub outlet for horizontal and vertical drainage for parapet applications. Constructed to withstand climate and the rigors of long-term use.



Features

- No Hub Outlet for Easy Installation
- Flashing Clamp with Secured Angle Grate Engineered to Last
- Engineered with Cast Iron for Long Life & Durability

Options/Accessories

- Nickel Bronze Grate & Frame
- Flat Grate
- Vandal Proof Grate
- Galvanized
- 45 Degree Outlet (No Hub Only)
- Threaded Outlet
- Available in 2", 3", 4" & 6"

SIDE OUTLET

Versatile and economical, this drain was designed to accommodate drainage in spaces where normal vertical drainage is impeded by structural limitations.



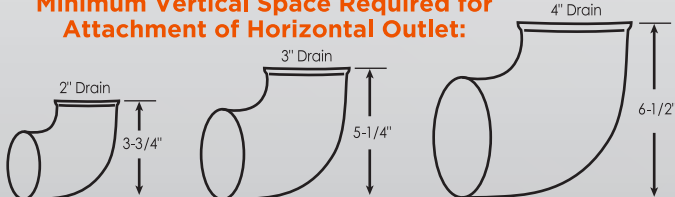
Features

- Horizontal Discharge to Route Water Laterally in Shallow Access Areas
- 90 Degree Outlet

Options/Accessories

- Aluminum Strainer
- 2-3/4" Low Profile Aluminum Strainer
- Cast Iron Strainer
- Aluminum or Metal Clamping Ring
- No Clamping Ring
- TPO or PVC Coated Flange
- Available in 2", 3", & 4"

Minimum Vertical Space Required for Attachment of Horizontal Outlet:



RD-280

Cast iron roof drain with deck flange, drain body, flashing clamp with integral gravel guard, self-locking cast iron dome, and no hub outlet. Constructed to withstand climate and the rigors of long-term use.



Features

- Engineered with Cast Iron for Long Life & Durability
- Deck Flange & Flashing Clamps with Integral Gravel Guard for Reliable Drainage
- Self-Locking Cast Iron Dome & No Hub Outlet to Simplify Installation & Maintenance

Options/Accessories

- Vandal Proof Strainer
- Available in 2", 3" & 4"

ONE PIECE CAST IRON DRAINS

RD-280-SO

Cast iron roof drain with deck flange, drain body, flashing clamp with integral gravel guard, self-locking cast iron dome, and no hub side outlet. Constructed to withstand climate and the rigors of long-term use.



Features

- Engineered with Cast Iron for Long Life & Durability
- Deck Flange & Flashing Clamps with Integral Gravel Guard for Reliable Drainage
- Self-Locking Cast Iron Dome & No Hub Side Outlet to Simplify Installation & Maintenance

Options/Accessories

- Vandal Proof Strainer
- Available in 2", 3" & 4"



PVC Coating Only

RD100CP

Epoxy coated cast iron roof drain with flashing clamp with integral gravel stop, 12-3/4 in. x 12-3/4 in. (324 x 324) square epoxy coated ductile iron heel proof promenade top, and no hub (standard) outlet. Constructed to withstand climate and the rigors of long-term use



Features

- Heel Proof Promenade Top
- No Hub Outlet for Easy Installation
- Epoxy Coating Cast Iron Drain for Smooth Finish & Long Life

Options/Accessories

- Push-On or Threaded Outlets
- Sump Receiver
- Under-Deck Clamp
- Side Outlet
- Adjustable Extension Flange
- Available in 2" - 6"

CAST IRON PROMENADE

RD200CP

Epoxy coated cast iron promenade roof drain with integral slot drainage, 8 x 8 in. (203 x 203mm) square heel proof epoxy coated ductile iron promenade top, and no hub outlet.



Features

- Engineered with Cast Iron for Long Life & Durability
- Heel Proof Epoxy Coated Ductile Iron Promenade Top for a Smooth Surface, Built to Last
- No Hub Outlet for Easy Installation

Options/Accessories

- Push On
- Threaded Outlet
- Vandal Proof Top
- Flashing Collar
- Sump Receiver
- Under-Deck Clamp
- Deck Flange/Adjustable Extension
- Available in 2", 3" & 4"

RD-230

Epoxy coated cast iron side outlet balcony roof drain with flashing clamp, cast nickel bronze dome strainer, and IPS threaded outlet. Constructed to withstand climate and the rigors of long-term use.



Features

- Flashing clamp for secure installation
- IPS threaded outlet
- Cast nickel bronze dome strainer resists wear and discoloration
- Engineered with cast iron for long life and durability

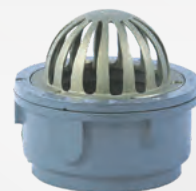
Options/Accessories

- Vandal proof strainer
- Stainless steel screened strainer
- Flat grate
- Galvanized body & flashing clamp
- Available in 2", 3" and 4"

CAST IRON DRAIN ACCESSORIES

RD-240

Epoxy coated cast iron bottom outlet balcony roof drain with flashing clamp, cast nickel bronze dome strainer, and IPS threaded outlet. Constructed to withstand climate and the rigors of long-term use.



Features

- Cast Nickel Bronze Dome Strainer Resists Wear & Discoloration
- Flashing Clamp for Secure Installation
- IPS Threaded Outlet
- Engineered with Cast Iron for Long Life & Durability

Options/Accessories

- Vandal Proof Strainer
- Flat Grate
- Stainless Steel Screened Strainer
- Galvanized Body & Flashing Clamp
- Available in 2", 3" & 4"



PVC Coating
Only

DRAIN ACCESSORIES

STRAINERS

Available in many sizes in Plastic, Aluminum & Cast Iron.



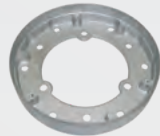
RETROFIT RINGS & DOMES

Available in Aluminum & Cast Iron to replace missing Strainers & Rings.



ALUMINUM OVERFLOW RING

Our new overflow ring will double as both an overflow and clamping ring eliminating the need for extra parts and hardware.



RUBBER COUPLINGS



CLAMPING RINGS

Roof Drain Clamping Rings are available in many sizes.



DOWNSPOUT ALUMINUM WALLFLOWERS

Features

- Reduces Installation Time with Universal Gasketed Connection for Cast Iron, PVC & IPS Pipe
- Eliminates Building Staining with Powder-Coated Cast Aluminum
- Built-in Hinged Bird Screen
- Protects Against Theft with Integrated Wall Flange
- Available in Sizes 3," 4," 6" & 8"
- Available in Nickel Bronze (NB), Silver (SL) & Brick Red (RD)



RD-940 DOWNSPOUT NOZZLES

Cast nickel bronze downspout nozzle featuring a durable anchor flange, countersunk mounting holes for a flush installation, and multiple connection options including standard IPS threaded, no hub, or push-on fittings. Designed for efficient water discharge and long-lasting performance in commercial and industrial drainage systems.



Bronze

Features

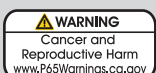
- IPS Threaded (Standard), No Hub or Push-On Connection to Match Drainage Conditions
- Designed with Anchor Flange & Countersunk Mounting Holes for Secure Installation
- Cast Nickel Bronze Provides Long Life & Durability



Plastic

Options/Accessories

- Stainless Steel Bird Screen
- No Hub
- Push-On Connection
- Bronze: Cast Nickel Bronze
- Silver: Aluminum
- Black: Plastic



PVC Coating
Only