



## COPPER-TITE

### Features

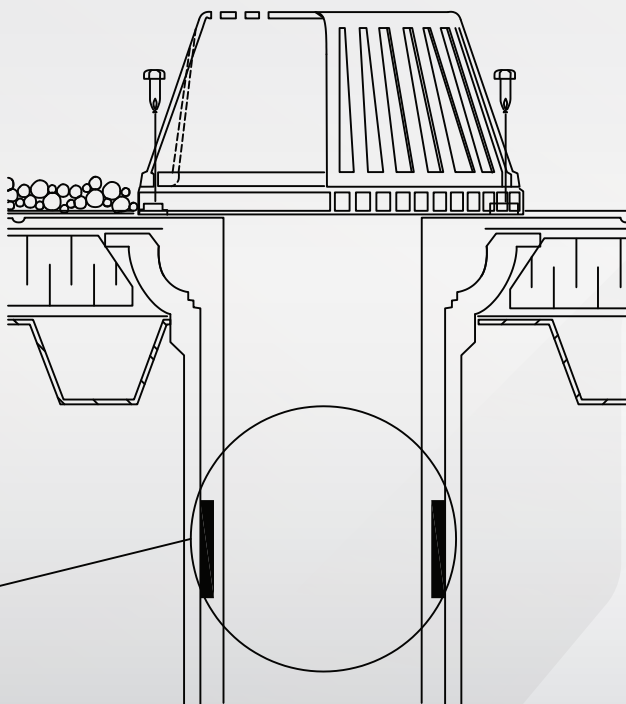
- Quick & Easy to Install
- 14" or 18" Copper Flange
- New Clamping Ring Style for Single-Ply Systems
- Bolt in Place Polyethylene Strainer
- Expanding Tape to Prevent Water Backflow Issues

### Options/Accessories

- Aluminum Strainer
- 2-3/4" Low Profile Aluminum Strainer
- Cast Iron Strainer
- Aluminum Clamping Ring
- Metal Clamping Ring
- 2" Overflow Ring
- TPO Coated Flange
- PVC Coated Flange
- Available in Sizes of 2" - 10"
- Available in Non-Standard Sizes of 2.5", 3.5", 4.5", 5.5" & 6.5"
- Custom Sizes Available

# COPPER-TITE™

**COPPER** for reliable longevity, **TITE** for a secure water tight fit. This retrofit roof drain is made up of a copper body, ABS clamping ring (standard), polyethylene strainer (standard) and expanding tape to prevent water back-flow issues.



Optional  
Expanded Seal

Compressed Seal

**WARNING**  
Cancer and  
Reproductive Harm  
[www.P65Warnings.ca.gov](http://www.P65Warnings.ca.gov)

**PVC Coating  
Only**

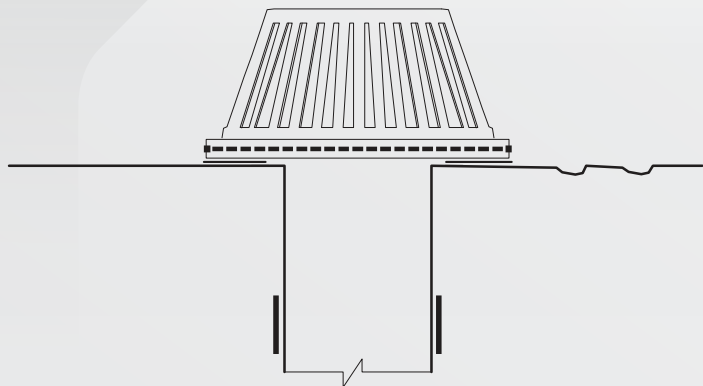
**Scan for Full  
Product Details!**



800.828.8424  
[marathondrains.com](http://marathondrains.com)



with expanding anti back-up seal feature



## Installation

COPPER-TITE Drains are designed to fit neatly into old existing drains in a retro-fit application.

### 3 Easy Steps To Install:

**STEP 1:** Inspect the old drain for possible cracks and for a smooth clean surface. Scrape away old asphalt and dirt. Use a heat gun to soften old asphalt and to achieve a relatively dry surface, if necessary.

**STEP 2:** Test the size of the new COPPER-TITE drain by inserting it into the now clean original drain before removing the compression tape. With the correct size of COPPER-TITE now confirmed, remove the drain, release the compression tape and promptly re-insert the COPPER-TITE drain. The tape gradually expands to fill the space surrounding the outlet of the new COPPER-TITE thereby creating the back-up seal feature.

**STEP 3:** Flash in the drain flange according to methods determined by the membrane manufacturer and/or the roofer using the clamping ring, if applicable. Attach the strainer dome.

## Options & Specifications

**STRAINER DOMES:** Plastic is Standard, Aluminum & Cast Iron is Optional

**FLANGE OPTIONS:** Plain Finish - N/C • PVC & TPO Coatings



PVC Coating  
Only

800.828.8424  
marathondrains.com

## Precision Details

Drain Pipe Size	Cat #	Specification	Flange Size
2" 51mm	CTS29	150 x 9 (SF)*	14" 356mm
3" 76mm	CTS39	275 x 9 (SF)*	14" 356mm
4" 102mm	CTS49	375 x 9 (SF)*	14" 356mm
5" 127mm	CTS59	475 x 9 (SF)*	18" 457mm
6" 152mm	CTS69	575 x 9 (SF)*	18" 457mm
8" 203mm	CTS89	775 x 9 (SF)*	18" 457mm

## Precision Details

Drain Pipe Size	Cat #	Specification	Flange Size
2" 51mm	CTS29CR	150 x 9CR (LF)**	18" 457mm
3" 76mm	CTS39CR	275 x 9CR (LF)**	18" 457mm
4" 102mm	CTS49CR	375 x 9CR (LF)**	18" 457mm
5" 127mm	CTS59CR	475 x 9CR (LF)**	18" 457mm
6" 152mm	CTS69CR	575 x 9CR (LF)**	18" 457mm
8" 203mm	CTS89CR	775 x 9CR (LF)**	18" 457mm

## Precision Details

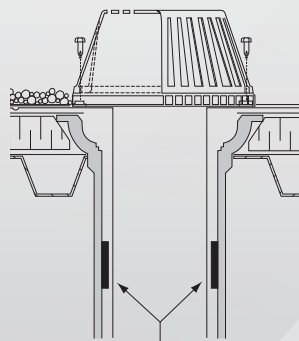
Drain Pipe Size	Cat #	Specification	Flange Size
2" 51mm	CTS29CRE	150 x 9CR (SF)*	14" 356mm
3" 76mm	CTS39CRE	275 x 9CR (SF)*	14" 356mm
4" 102mm	CTS49CRE	375 x 9CR (SF)*	14" 356mm
5" 127mm	CTS109CR	950 x 9CR (LF)*	18" 457mm
6" 152mm	w/ Aluminum Retro Ring & Dome		

\*(SF) Small Flange

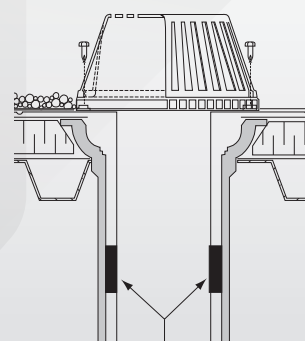
\*\* (LF) Large Flange

Drain Outlets may be ordered extended by 6 inches

Cast Iron Overflow Ring Available to Achieve Overflow Drain.



Compressed Seal



Expanded Seal