



CAST-PAK

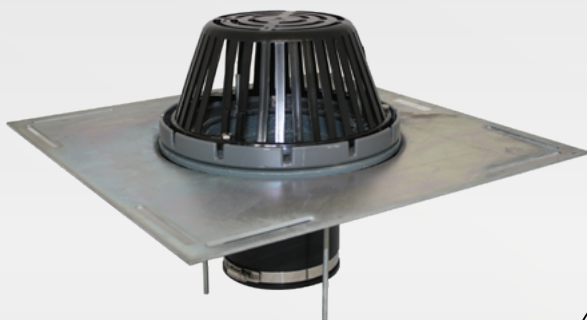


Features

- Epoxy-Coated Cast Iron Drain Body
- Molded Polyethylene Dome Strainer, Bolts Securely to Clamping Ring
- Epoxy-Coated Metal Clamping Ring with Gravel Stop
- Grooved for Positive Drainage on Smooth Roof Surfaces
- Metal Underdeck Clamp Included for Secure Mechanical Fastening
- Flexible Rubber Expansion Coupling Connects to PVC or Cast Iron Pipe
- UV-Stabilized, Corrosion-Resistant Components
- Options: Outlet Sizes: 3", 4", 6", 8", & 10"

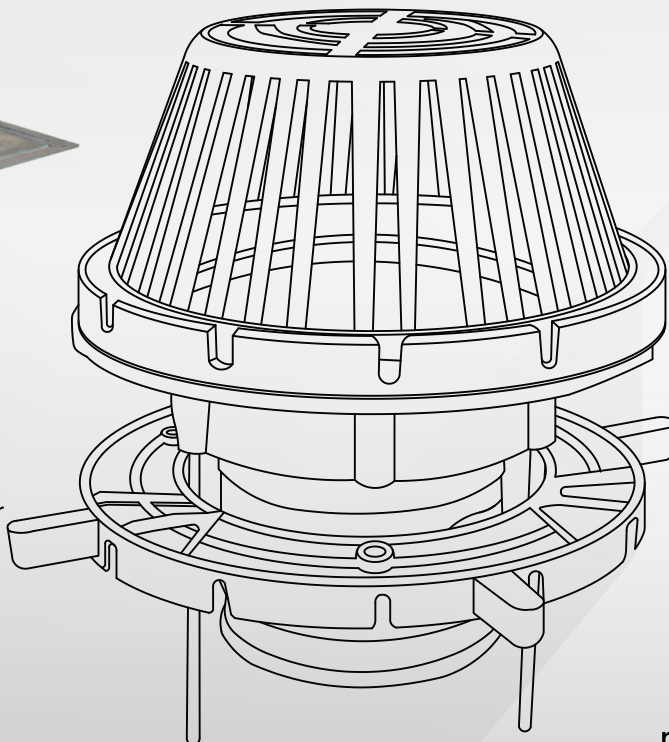
CAST_{pak}

The Cast-Pak™ roof drain delivers key features of high-performance cast iron drains at a cost effective price. With an epoxy-coated body, it suits single-ply and built-up roofs, installs on various deck types, and supports both new builds and retrofits with multiple outlet and sealing options.



Options/Accessories

- Aluminum or Cast Iron Strainer
- 2-3/4" Low Profile Aluminum Strainer
- Extension Flange
- Bearing Pan
- 2" Overflow Dam
- PVC Overflow Insert
- Available in 2", 3", 4" & 6"



PVC Coating
Only

Scan for Full
Product Details!



800.828.8424
marathondrains.com

Installation for Re-Roofing, Roof-Over
& New Roof Construction

Installation Information

Installation Information Should be Read Before Proceeding to Install Drain.

1. Flashing Attachment

Install single ply membrane, soft copper, lead or BUR felt flashing between clamping ring and drain flange.

2. Coupling Hook-Up

Will attach to Schedule 40 DWV plastic or no hub cast iron drain line.

3. Accessory Tightening Procedure

Use a maximum of 60" lbs. of torque to tighten coupling bands and use care when securing clamping ring and underdeck clamp. Excessive tightening not required.

4. Special Note

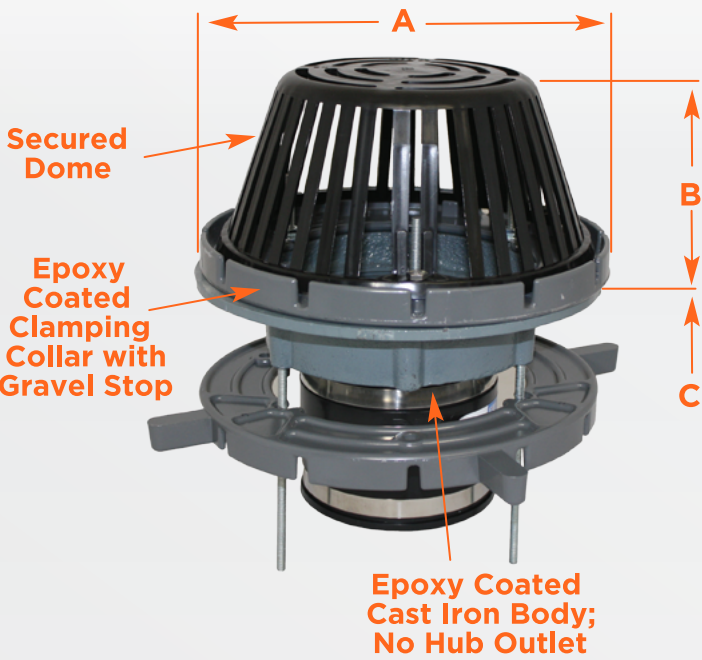
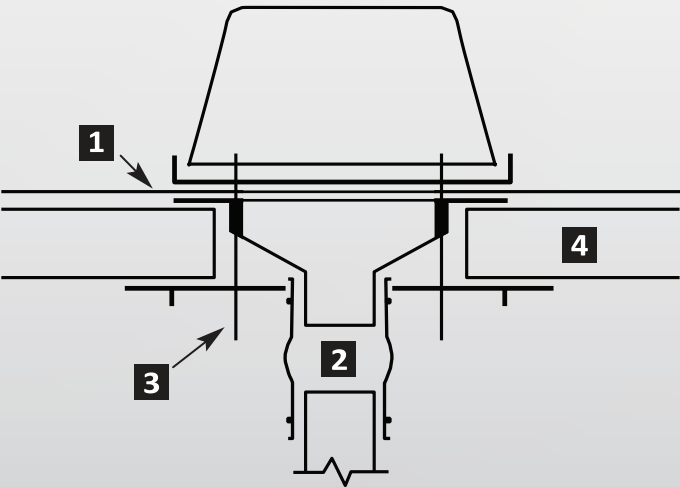
Wet or damaged insulation or insulation with low compressive strength should be removed around drain flange seating area and replaced with insulation having a minimum compressive value of 25 PSI.

RD-1 Series Drains

- Large Flat Flange Allows Easy Installation in Any Type of Roof Deck
- Cast Epoxy Coated Elumaloy Flashing Clamp will Not Rust or Fracture like Cast Iron Clamps & will Not Distort like Plastic Clamps
- Options Available to Suit All Standard Installations

Options

- Under Deck Clamp
- Extension Flange
- Metal Dome
- Bearing Pan
- Waterproofing Flange
- Flotrol Device



Precision Details

Drain Pipe Size	Option A	
3" 76mm, 4" 102mm	10.25" 260mm	
6" 152mm	15.625" 397mm	x 12" Strainer
8" 203mm	15.625" 397mm	x 12" Strainer

Drain Pipe Size	Option B	
3" 76mm, 4" 102mm	5" 127mm	
6" 152mm	8" 204mm	x 12" Strainer
8" 203mm	8" 204mm	x 12" Strainer

Drain Pipe Size	Option C	
3" 76mm, 4" 102mm	3.25" 83mm	
6" 152mm	5.5" 140mm	x 12" Strainer
8" 203mm	5.5" 140mm	x 12" Strainer