



MARATHON ROOFING PRODUCTS, INC
3310 N BENZING ROAD
ORCHARD PARK, NY 14127-1538
TOLL FREE: 1-800-828-8424
PHONE: (716) 332-7673
FAX: (716) 332-7676
www.marathondrains.com

SELECT DESIRED STYLE:

☐ ONE WAY (SHOWN)

☐ TWO-WAY

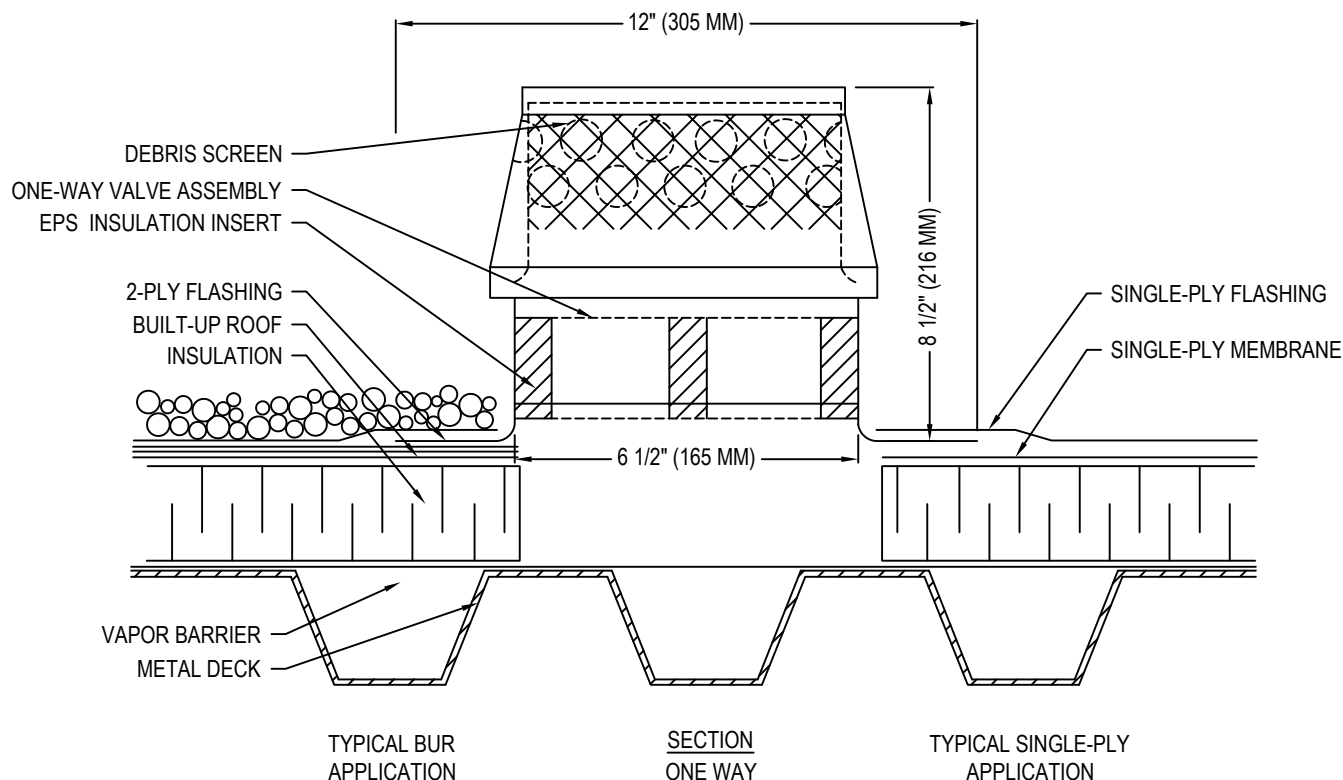
SELECT DESIRED FLANGE:

☐ PVC COATED

☐ TPO COATED

SELECT DESIRED OPTION:

☐ FOAM INSERT TO PREVENT CONDENSATION



SPECIFICATIONS:

MATERIAL: ALUMINUM

BASE OPENING: 6 1/2" (165 MM)

FLANGE DIAMETER: 12" (254 MM)

RECOMMENDED SPACING: 1 PER 1500 SQ.FT (139 SQ. M)

OVERALL HEIGHT: 8 1/2" (216 MM)

BASE OPENING WITH INSERT: 5 3/8" (136 MM)

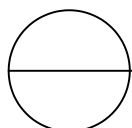
FLANGE MATERIAL: ALUMINUM

INCLUDES:

- AN EXTRA WIDE BASE OPENING AND SECURITY ATTACHED CAP
- SPUN FROM HEAVY GAUGE ALUMINUM
- UNIQUE CAP DESIGN SHIELDS AGAINST ENTRY OF WIND-BLOWN OR SNOW

NOTES:

1. INSTALLATION TO BE COMPLETED IN ACCORDANCE WITH MANUFACTURER'S SPECIFICATIONS.
2. DO NOT SCALE DRAWING.
3. THIS DRAWING IS INTENDED FOR USE BY ARCHITECTS, ENGINEERS, CONTRACTORS, CONSULTANTS AND DESIGN PROFESSIONALS FOR PLANNING PURPOSES ONLY. THIS DRAWING MAY NOT BE USED FOR CONSTRUCTION.
4. ALL INFORMATION CONTAINED HEREIN WAS CURRENT AT THE TIME OF DEVELOPMENT BUT MUST BE REVIEWED AND APPROVED BY THE PRODUCT MANUFACTURER TO BE CONSIDERED ACCURATE.
5. CONTRACTOR'S NOTE: FOR PRODUCT AND COMPANY INFORMATION VISIT www.CADdetails.com/info AND ENTER REFERENCE NUMBER 5355-032.



ROOF VENTS

MC VENT