



MARATHON ROOFING PRODUCTS, INC
 3310 N BENZING ROAD
 ORCHARD PARK, NY 14127-1538
 TOLL FREE: 1-800-828-8424
 PHONE: (716) 332-7673
 FAX: (716) 332-7676
 www.marathondrains.com

SELECT DESIRED SIZE:

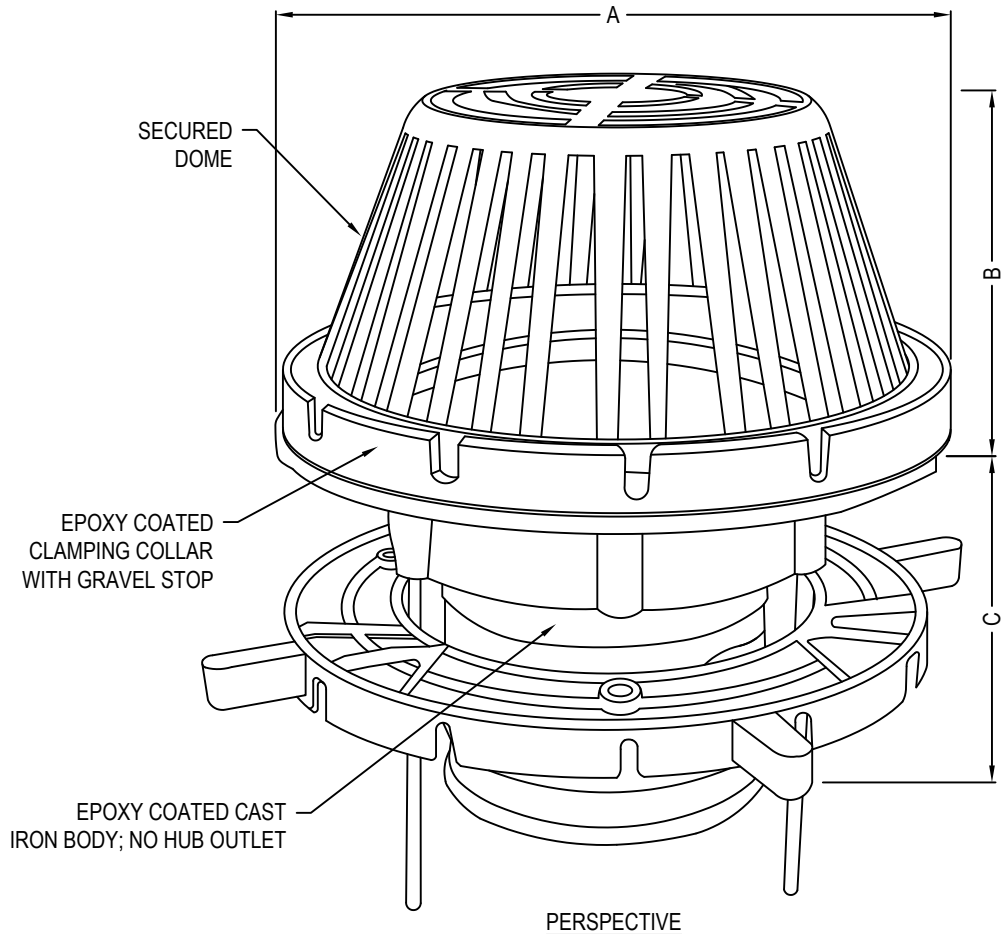
- ☐ 3" (76 MM)
☐ 4" (102 MM)
☐ 6" (152 MM)
☐ 8" (203 MM)

SELECT DESIRED FLANGE:

- ☐ EXTENSION
☐ WATERPROOF

SELECT DESIRED OPTION:

- ☐ OVER FLOW DAM
☐ UNDER DECK CLAMP
☐ BEARING PAN
☐ METAL DOME
☐ FLOTROL DEVICE



PERSPECTIVE

DRAIN PIPE SIZE	OPTION A	OPTION B	OPTION C	
3" (76 MM)	10.25" (260 MM)	5" (127 MM)	3.25" (83 MM)	
4" (102 MM)	10.25" (260 MM)	5" (127 MM)	3.25" (83 MM)	X 12" STRAINER
6" (152 MM)	15.62" (397 MM)	8" (204 MM)	5.5" (140 MM)	X 12" STRAINER
8" (203 MM)	15.62" (397 MM)	8" (204 MM)	5.5" (140 MM)	

SPECIFICATIONS:

BODY: CAST IRON

OUTLET LENGTH: NO HUB

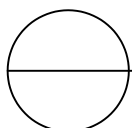
CLAMPING RING: 10" EPOXY COATED ALUMINUM

STRAINER: 10" POLYETHYLENE

LARGE FLAT FLANGE ALLOWS EASY INSTALLATION IN ANY TYPE OF ROOF DECK

NOTES:

1. INSTALLATION TO BE COMPLETED IN ACCORDANCE WITH MANUFACTURER'S SPECIFICATIONS.
2. DO NOT SCALE DRAWING.
3. THIS DRAWING IS INTENDED FOR USE BY ARCHITECTS, ENGINEERS, CONTRACTORS, CONSULTANTS AND DESIGN PROFESSIONALS FOR PLANNING PURPOSES ONLY. THIS DRAWING MAY NOT BE USED FOR CONSTRUCTION.
4. ALL INFORMATION CONTAINED HEREIN WAS CURRENT AT THE TIME OF DEVELOPMENT BUT MUST BE REVIEWED AND APPROVED BY THE PRODUCT MANUFACTURER TO BE CONSIDERED ACCURATE.
5. CONTRACTOR'S NOTE: FOR PRODUCT AND COMPANY INFORMATION VISIT www.CADdetails.com/info AND ENTER REFERENCE NUMBER 5355-015.



ROOF DRAINS

CAST PAK