



ALUMINUM FAST FLOW

Features

- Quick & Easy to Install
- Heavy Gauge Aluminum Drain Body
- New Clamping Ring Style for Single-Ply Systems
- Bolt in Place Polyethylene Strainer
- Expanding Tape to Prevent Water Back-Up Issues
- Available without Clamping Ring

Options/Accessories

- Available in 2", 3", 4", 5", 6", 8" and Non-Standard Sizes
- New Clamping Ring Style for Single-Ply Systems
- Constructed of Heavy Gauge (.081) Spun Aluminum
- Common Sizes Available for New & Retrofit Styles
- Quick & Easy to Install & Maintain
- Bolt-in-Place PVC Strainer Dome Standard, Cast Iron or Aluminum Strainers Optional
- Efficient & Economical
- Optional Anti-Backup Seals Available
- Optional Aluminum 2" Overflow Ring Available

Connection Options:

Straight Rubber Coupling	2", 3", 4", 6", 3" to 2", 4" to 3", 6" to 5"
XJ Rubber Coupling	2", 3", & 4"
Bushing Reducers	2", 3", & 4"
FERNCO 90° Elbow	2", 3", & 4"
Flange Options:	Strainer Options:
Primed Finish	8" Aluminum Strainer
PVC Coated/ TPO Coated	10" Cast Iron Strainer (CR Style)

Efficient and economical, this can be utilized as both a retrofit or a new installation direct connect drain. It is made up of a heavy gauge spun aluminum drain body, ABS clamping ring (standard), polyethylene strainer (standard) and optional expanding tape to prevent water backflow issues.



Scan for Full
Product Details!



PVC Coating
Only

800.828.8424
marathondrains.com

Retrofit

PART #	Fits Existing Drain Pipe Size		Outlet Outside Diameter	
	inches	mm	inches	mm
Fast Flow Drain				
FF175	1-3/4" x 2-1/4"	44 mm x 57 mm	1.625"	41 mm
FF275	2-3/4" x 3-1/4"	70 mm x 83 mm	2.625"	67 mm
FF375	3-3/4" x 4-1/4"	95 mm x 108 mm	3.625"	92 mm
FF475	4-3/4" x 5-1/4"	121 mm x 133 mm	4.625"	118 mm
FF575	5-3/4" x 6-1/4"	146 mm x 159 mm	5.625"	143 mm
Fast Flow Drain with Clamping Ring (CR)				
FF175CR	1-3/4" x 2-1/4"	44 mm x 57 mm	1.625"	41 mm
FF275CR	2-3/4" x 3-1/4"	70 mm x 83 mm	2.625"	67 mm
FF375CR	3-3/4" x 4-1/4"	95 mm x 108 mm	3.625"	92 mm
FF475CR	4-3/4" x 5-1/4"	121 mm x 133 mm	4.625"	118 mm
FF575CR	5-3/4" x 6-1/4"	146 mm x 159 mm	5.625"	143 mm
FF775-CR	7-3/4" x 8-1/4"	197 mm x 210 mm	7.625"	194 mm
Fast Flow Drain with Expanding Anti Back-Up Seal				
FF175-S	1-3/4" x 2-1/4"	44 mm x 57 mm	1.625"	41 mm
FF275-S	2-3/4" x 3-1/4"	70 mm x 83 mm	2.625"	67 mm
FF375-S	3-3/4" x 4-1/4"	95 mm x 108 mm	3.625"	92 mm
FF475-S	4-3/4" x 5-1/4"	121 mm x 133 mm	4.625"	118 mm
FF575-S	5-3/4" x 6-1/4"	146 mm x 159 mm	5.625"	143 mm
Fast Flow Drain with Expanding Anti Back-Up Seal & Clamping Ring (CR)				
FF175-SCR	1-3/4" x 2-1/4"	44 mm x 57 mm	1.625"	41 mm
FF275-SCR	2-3/4" x 3-1/4"	70 mm x 83 mm	2.625"	67 mm
FF375-SCR	3-3/4" x 4-1/4"	95 mm x 108 mm	3.625"	92 mm
FF475-SCR	4-3/4" x 5-1/4"	121 mm x 133 mm	4.625"	118 mm
FF575-SCR	5-3/4" x 6-1/4"	146 mm x 159 mm	5.625"	143 mm
FF775-SCR	7-3/4" x 8-1/4"	197 mm x 210 mm	7.625"	194 mm

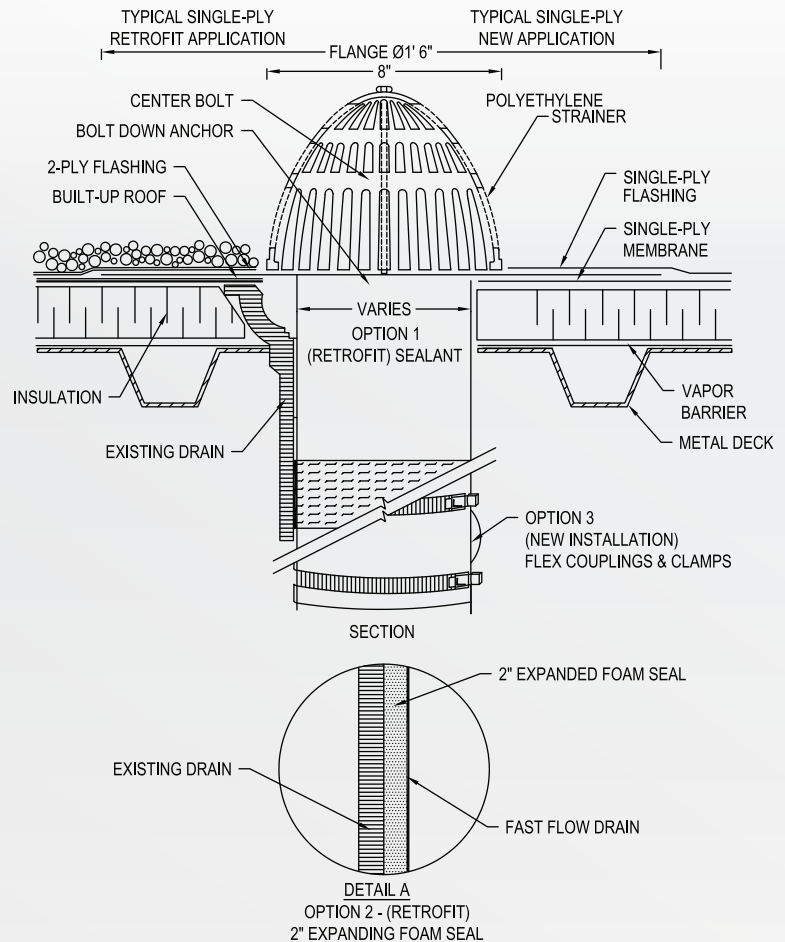
New Installation Direct-Connect

PART #	Fits Existing Drain Pipe Size		Outlet Outside Diameter	
	inches	mm	inches	mm
Fast Flow Drain				
FF200	2"	51 mm	2.125"	54 mm
FF300	3"	76 mm	3.125"	79 mm
FF400	4"	102 mm	4.125"	105 mm
Fast Flow Drain with Clamping Ring (CR)				
FF200CR	2"	51 mm	2.125"	54 mm
FF300CR	3"	76 mm	3.125"	79 mm
FF400CR	4"	102 mm	4.125"	105 mm

Dimensions

	inches	mm
A	16 - 1/2"	419 mm
B	7 - 1/2"	191 mm
C	5"	127 mm
D	10"	254 mm

800.828.8424
marathondrains.com



Installation

STEP 1: Determine exact dimension of drain pipe. Select appropriate drain to connect to or fit inside the existing drain pipe. Retro-fit drain may be set in a shallow bowl or directly on roof membrane with deck opening of at least 1" (25mm) greater than the leader size into which the drain will be inserted. The flange is adaptable to all membranes.

STEP 2: For Fast Flow with expandable tape the installer removes the exterior restraining tape and immediately sets the retro drain in place. The released tape gradually expands to fill the space between the Fast Flow drain and the existing drain sleeve making the connection watertight. Direct-connect design utilizes flexible expansion-type connectors to prevent failure from movement of roof deck or drain.

STEP 3: Flash drain flange in accordance with membrane manufacturer's instructions.

